

REVISIONS
12/27/16
12/14/16

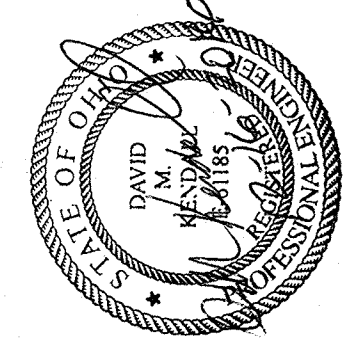
SITUATED IN THE CITY OF GREEN
COUNTY OF SUMMIT, STATE OF OHIO,
AND KNOWN AS BEING PART OF S.W.
QUARTER SECTION 9 AND PART OF
N.W. QUARTER SECTION 16 OF
FORMER GREEN TOWNSHIP

SITE DATA

TOTAL AREA	88,298 AC.
ZONING	B-2 PROFESSIONAL OFFICE
MINIMUM LOT WIDTH	1 AC.
MINIMUM FRONT YARD SETBACK	150 FT.
MINIMUM SIDE YARD SETBACK (EACH SIDE)	50 FT. OR 10% OF BLDG. WHICHEVER IS GREATER.
MINIMUM REAR YARD SETBACK	WHICHEVER IS GREATER, 60 FT.
MAXIMUM HT. OF PRINCIPAL BUILDINGS	60 FT.
MAXIMUM BUILDING FOOTPRINT SIZE	NONE
MAXIMUM LOT COVERAGE BY BUILDINGS	33%
MAXIMUM LOT COVERAGE BY ACCESSORY USES (INCLUDING PARKING AREAS)	33%
MAXIMUM LOT COVERAGE BY IMPERVIOUS SURFACES	75%

PHASE TABLE

PHASE ONE	33,149 AC.
PHASE TWO	33,149 AC.
PHASE THREE	21,999 AC.
TOTAL	88,298 AC.



GBC Design, Inc.
666 White Pond Dr.
Akron, OH 44320
Phone 330-896-0225
Fax 330-896-8782

GREEN LAND TRUST, LTD.
821 S. MAIN ST.
NORTH CANTON, OH 44720

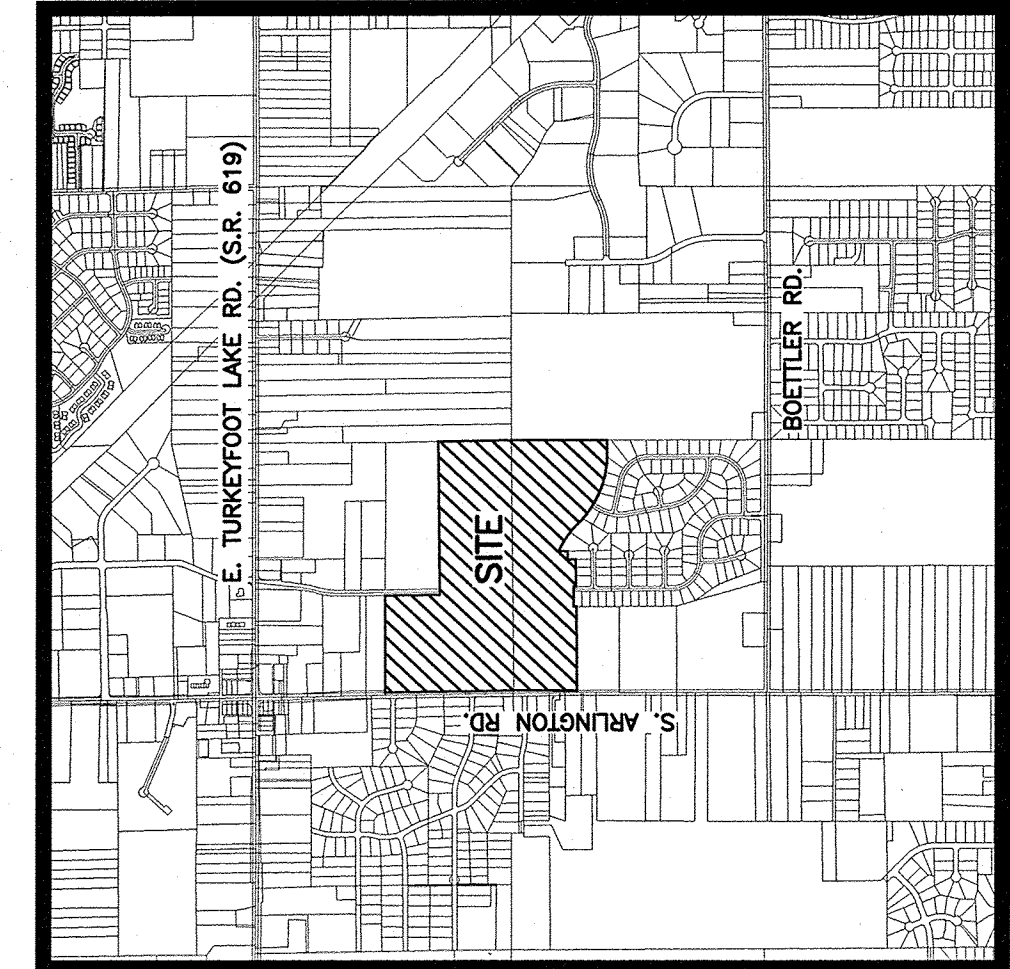
SPRING HILL BUSINESS PARK
CITY OF GREEN,
SUMMIT COUNTY, OHIO
PRELIMINARY PLAN

DRAWN BY: LSKM
DATE: NOV. 7, 2016
PROJECT NO. 3209800
DRAWING NO. 1 OF 1

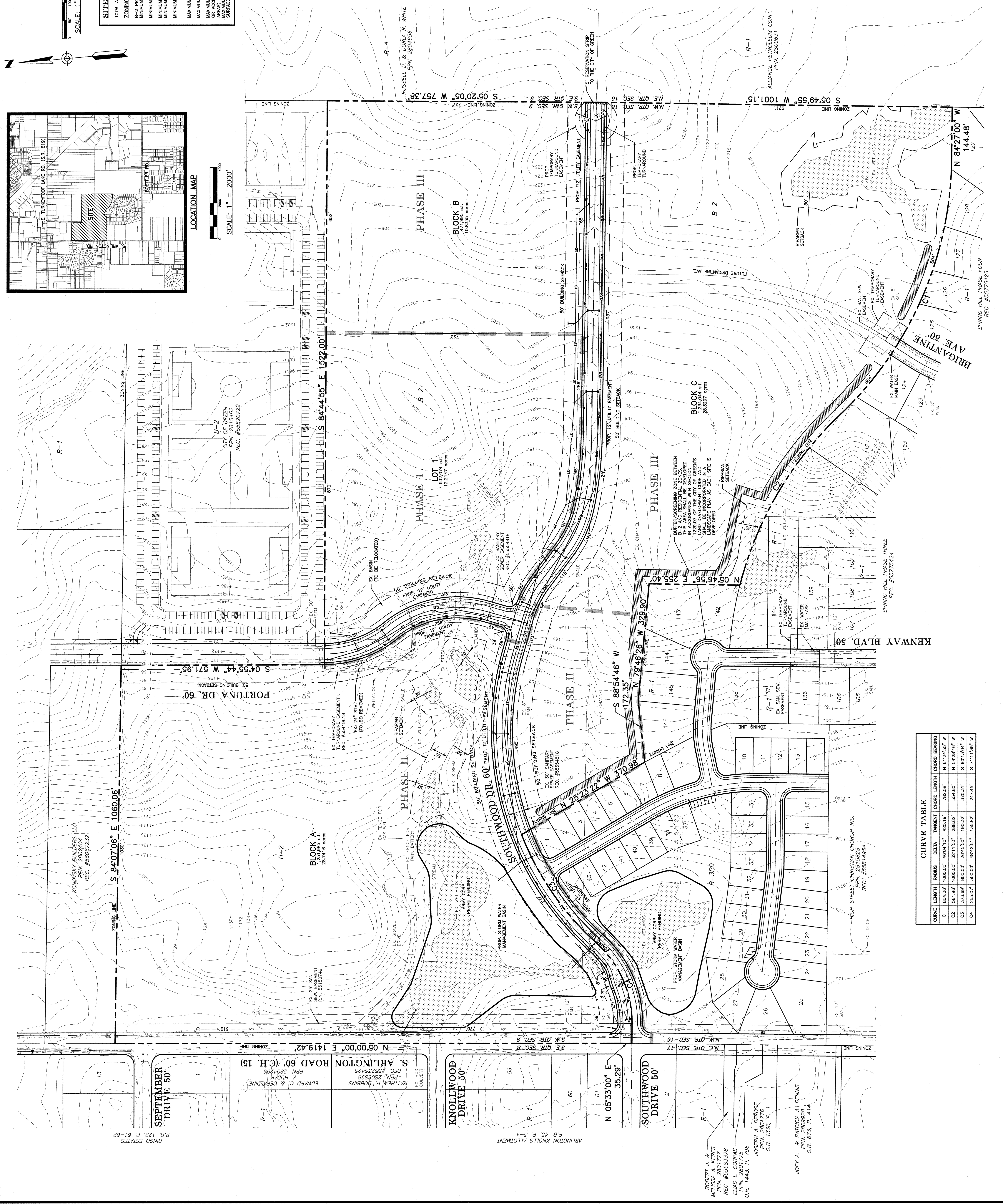
DEVELOPER:
GREEN LAND TRUST, LTD.
821 S. MAIN ST.
NORTH CANTON, OH 44720
REP.: ROBERT J. DAHOFF
PHONE: 330-499-8133

AERIAL PHOTOGRAPHY TAKEN FROM
SUMMIT COUNTY GIS 2015 AERIAL
PHOTOGRAPHY.

WETLAND DELINEATION TAKEN FROM
PRELIMINARY JURISDICTIONAL WATERS
AND WETLANDS MAP BY CIVIL
& ENVIRONMENTAL CONSULTANTS, INC.,
DATED 6/14/16.



LOCATION MAP
SCALE: 1" = 2000'



CURVE TABLE

CURVE	LENGTH	RADIUS	DELTA	TANGENT	CHORD LENGTH	CHORD BEARINGS
C1	804.05'	1000.00'	46°04'10"	425.19'	782.58'	N 61°24'55" W
C2	561.96'	1000.00'	32°11'33"	288.62'	554.60'	N 54°28'46" W
C3	373.69'	800.00'	26°45'50"	190.32'	370.31'	S 60°13'04" W
C4	255.07'	300.00'	48°42'51"	135.82'	247.45'	S 71°11'35" W