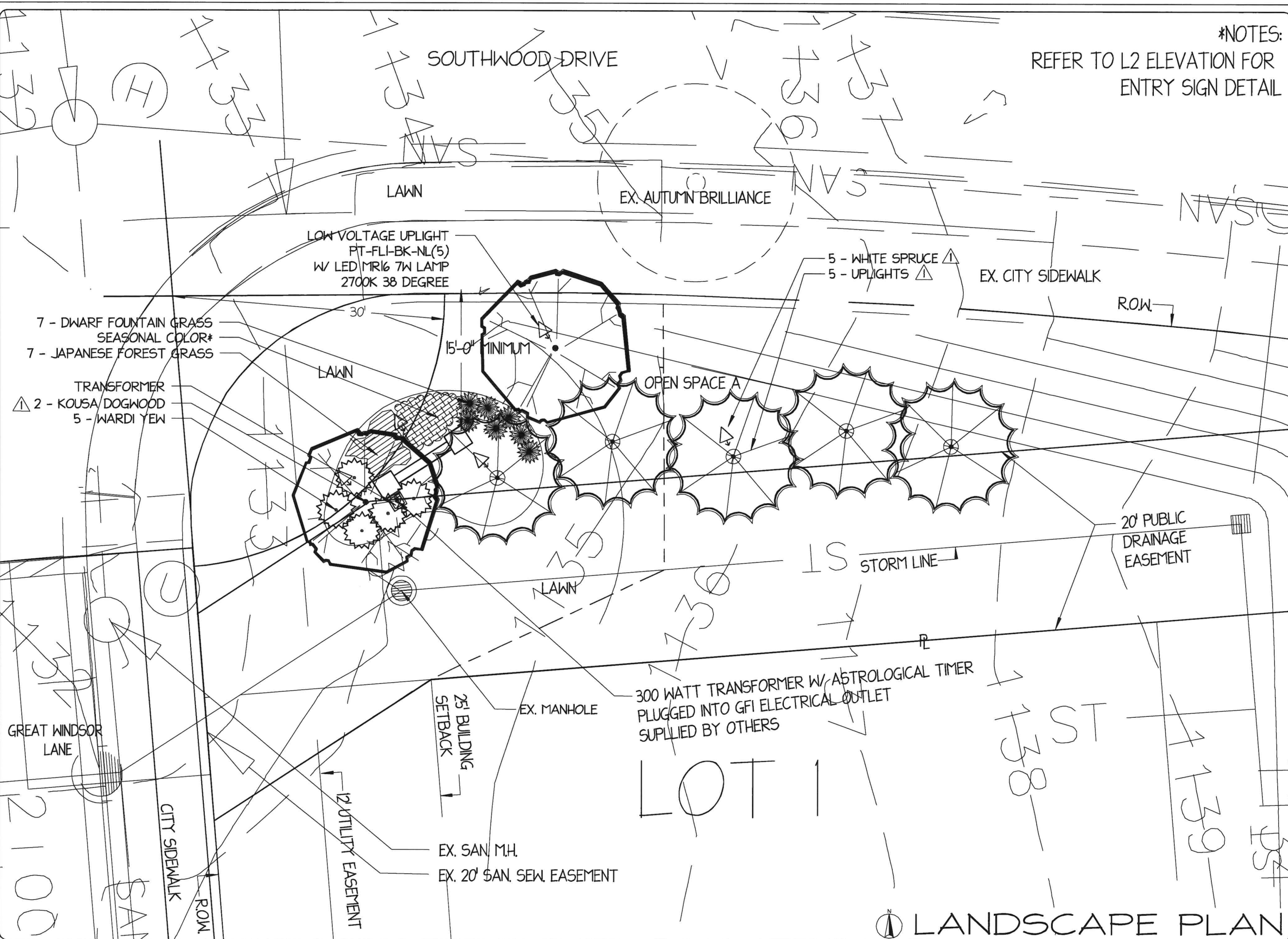


SOUTHWOOD DRIVE

*NOTES:
REFER TO L2 ELEVATION FOR
ENTRY SIGN DETAIL

SPRING HILL VILLAS

PROJECT ADDRESS
ROAD "B" - TBD
UNIONTOWN, OHIO



7/17 MOVED TREES AND LIGHTS

NO DATE DESCRIPTION
REVISIONS

ALL IDEAS, DESIGNS, AND PLANS
INDICATED BY THIS DRAWING ARE
OWNED BY RICE'S NURSERY &
LANDSCAPE, INC. AND WERE
CREATED, AND DEVELOPED FOR
THE USE ON, AND IN CONNECTION
WITH THE SPECIFIED PROJECT.
NONE OF SUCH IDEAS, DESIGNS,
OR PLANS SHALL BE USED BY
OR DISCLOSED TO ANY PERSON,
FIRM OR CORPORATION FOR ANY
PURPOSE WHATSOEVER WITHOUT
THE WRITTEN PERMISSION OF
RICE'S NURSERY & LANDSCAPES,
INC.



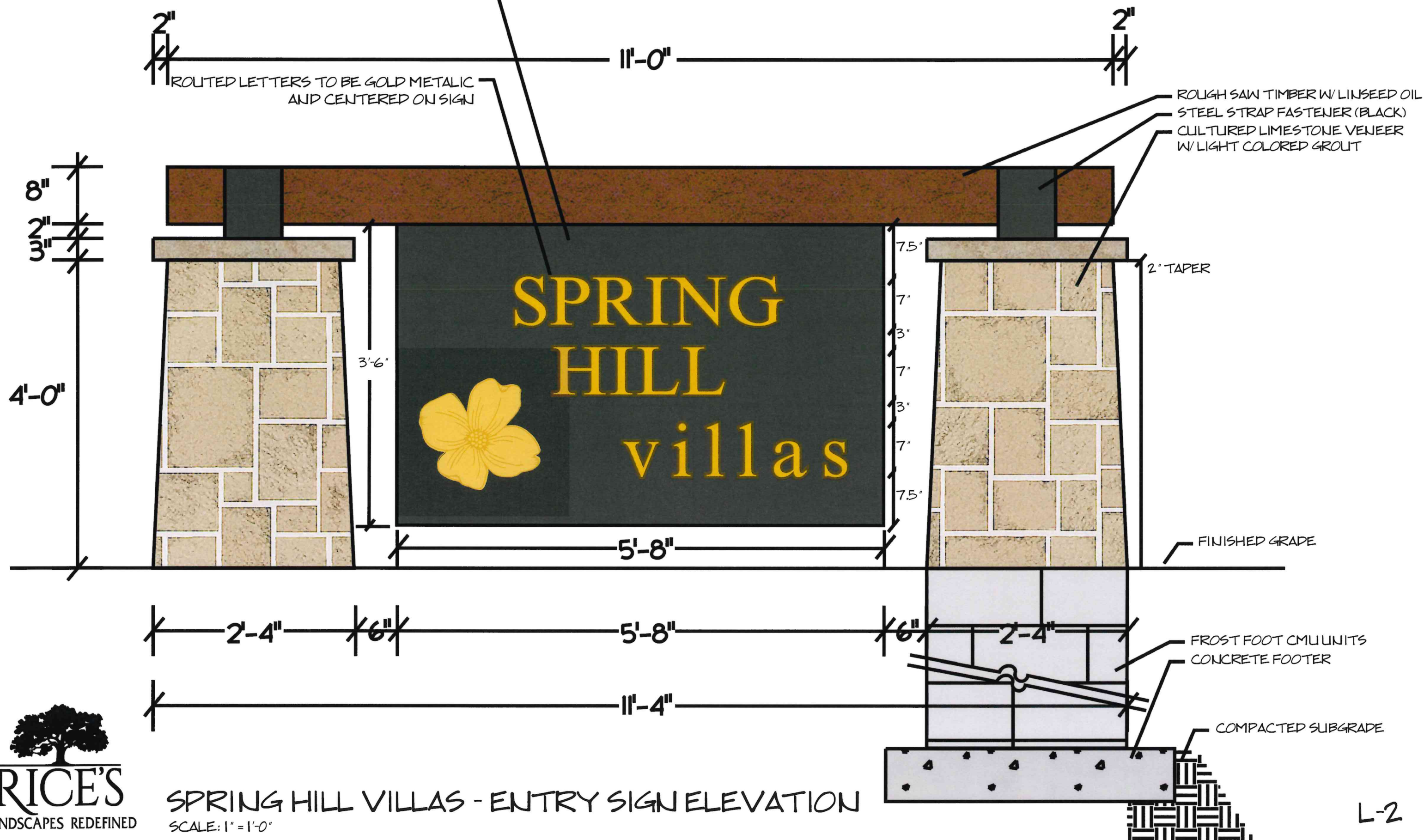
RICE'S
LANDSCAPES REDEFINED

SCALE: 1" = 10'
DRAWN BY: EF
CHECKED BY: KR
DATE: 6/5/2025

PROJECT NO.
SHEET NO.
L-1

LANDSCAPE PLAN

ONE SIDED SIGNAGE CONSTRUCTED OF HIGH DENSITY SIGN BOARD ATTACHED W/ ANGLE IRON TO BOTTOM OF TIMBER BASE COLOR SHERWIN WILLIAMS MANOR HOUSE SW 7505





PT-FL1

Product: _____ Type: _____
Project: _____

FINISH	PRODUCT CODE	HOUSING	LED
 Bronze	PT-FL1-BZ-NL	Aluminum	MR16/T3 Sold Separately
 Black	PT-FL1-BK-NL	Aluminum	MR16/T3 Sold Separately
 Antique	PT-FL1-BS-NL	Brass	MR16/T3 Sold Separately

SPECIFICATIONS

CONSTRUCTION:

- Aluminum or Brass Housing
- Adjustable Knuckle with Locking Teeth for Easy Aiming
- EPDM Rubber Plug in Base
- Silicone Gasket for Watertight Seal

LENS:

- Impact-Resistant Tempered Glass
- Includes Optional Clear Lens

LAMP:

- No Lamp Included
- Operates MR16 or T3 (35W Max) Bi-Pin Lamps

POWER:

- Input Voltage 12V

SOCKET:

- High-Temperature Ceramic
- GU5.3 Bi-Pin with Nickel Contacts
- Heat-Resistant Leads

MOUNT:

- Includes ABS Slotted Ground Stake

WIRING:

- Pre-Wired with Three Ft. SPT-2W Lead Wire

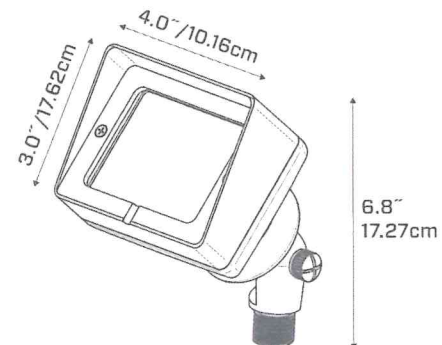
WARRANTY:

(Free from Material Defects and/or Workmanship)

- Brass: Lifetime
- Aluminum: Five Years

CERTIFICATIONS:

- ETL Listed to UL Standard 1838 and CAN/CSA-22.2 No. 250.7



ProTradeLighting.com



Exclusively at

SiteOne
LANDSCAPE SUPPLY