

**SITE BENCH MARK**  
 BENCH MARK #1  
 TOP OF HYDRANT  
 (SEE SHEET C100C)  
 ELEVATION = 1223.93

**SITE BENCH MARK**  
 BENCH MARK #2  
 TOP OF HYDRANT  
 (SEE SHEET C100C)  
 ELEVATION = 1224.95

**SITE BENCH MARK**  
 BENCH MARK #3  
 TOP OF HYDRANT  
 (SEE SHEET C100C)  
 ELEVATION = 1226.91

**WEBER ENGINEERING SERVICES**  
*Where Strong Relationships & Superior Service Guide Your Project*  
 2555 Hartville Rd., Suite B  
 Rootstown, OH 44272  
 www.WeberEngineeringServices.com  
 330-329-2037  
 matt@webercivil.com

STATE OF OHIO  
 MATTHEW WEBER  
 61709 REGISTERED PROFESSIONAL ENGINEER  
 Reg. No.: 61709

CLIENT:  
**DAVID PELLIGRA**  
 and architects, inc.  
 2231 Broad Blvd.  
 Cuyahoga Falls, Ohio 44223

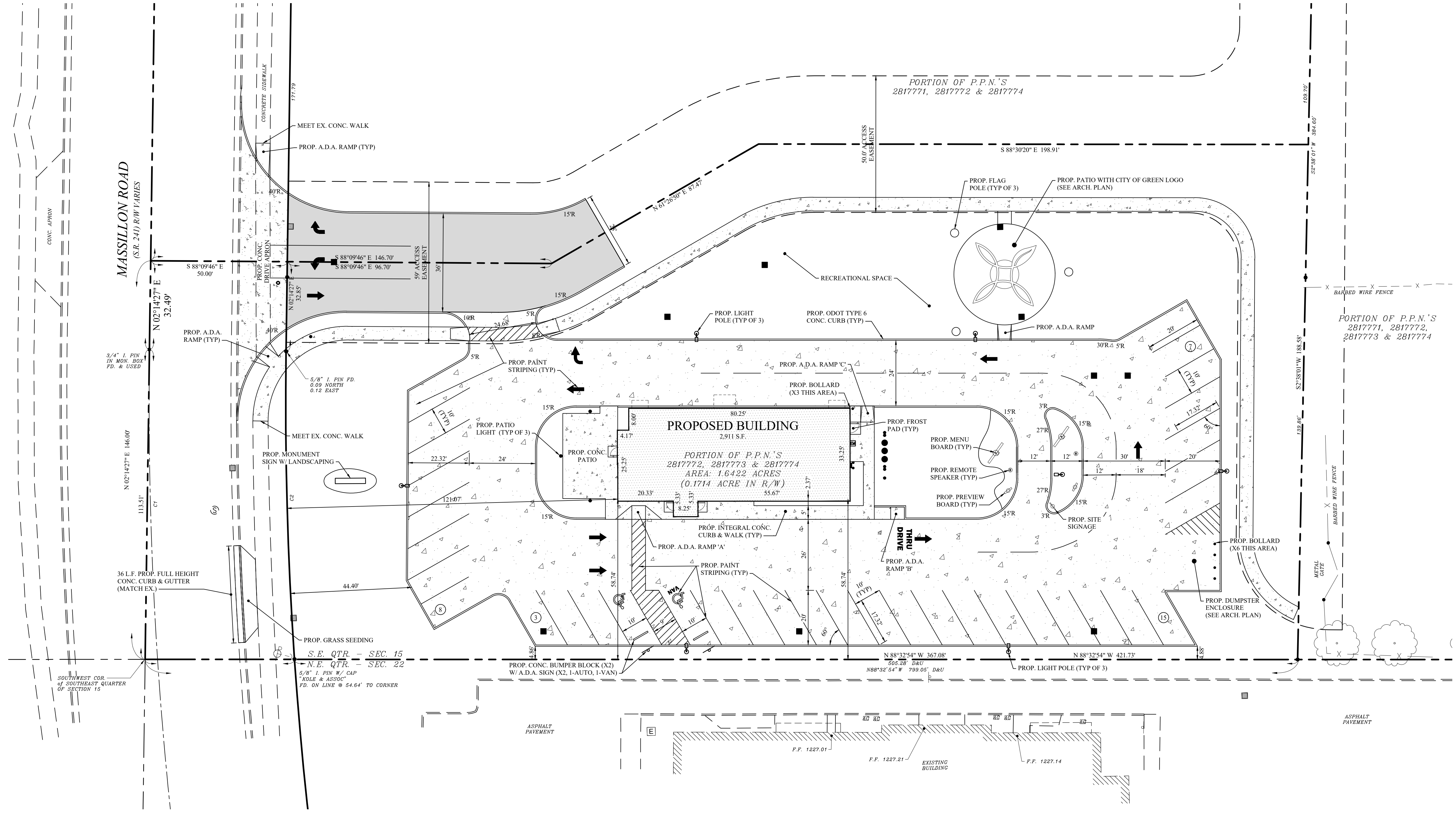
OWNER:  
**PARFAIT PROPERTIES, LLC**  
 715 PORTAGE TRAIL  
 CUYAHOGA FALLS, OHIO  
 44221

Issue Date  
 03-30-2026  
 05-04-2026

DAIRY QUEEN GRILL & CHILL  
 SITE IMPROVEMENTS  
 4015 MASSILLON ROAD GREEN, OHIO

**SITE PLAN**

**C102**  
 Project No. 2025-157



**SITE DATA**

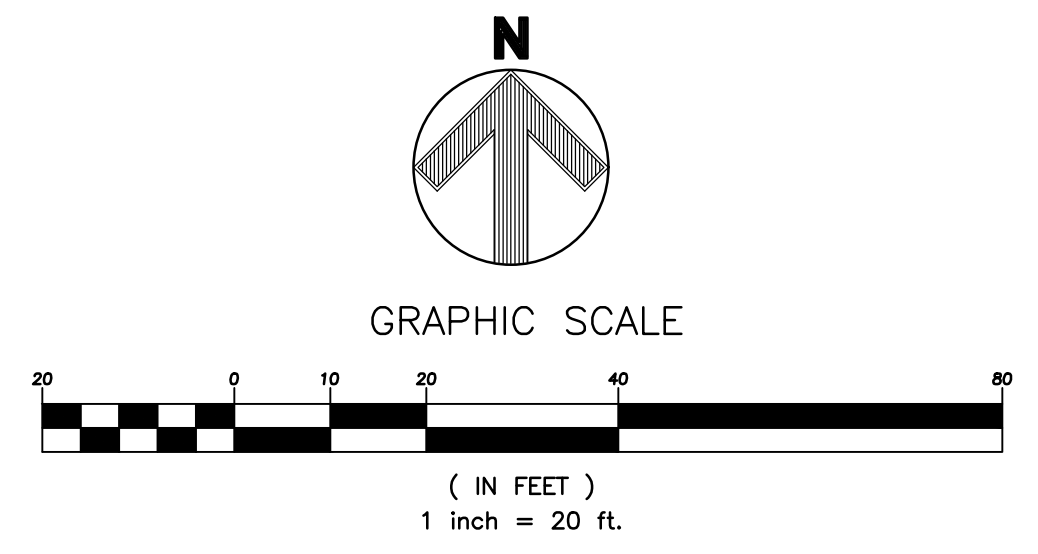
USE DISTRICT	= PD (PLANNED DEVELOPMENT)
SITE AREA	= (1.4708 AC.)
PROP. BUILDING AREA	= 2,815 S.F. (FOOTPRINT)
BUILDING SETBACKS: PER APPROVED DEVELOPMENT PLAN	
NUMBER OF PARKING SPACES:	
REGULAR PARKING SPACES	= 33
HANDICAP PARKING SPACES	= 2
TOTAL PARKING SPACES	= 35

**FLOOD ZONE**  
 FLOOD ZONE "X" PER FLOOD INSURANCE  
 RATE MAP NUMBER 39153C 0279 E  
 COMMUNITY PANEL NUMBER 39153 0279 E  
 EFFECTIVE DATE JULY 20, 2009

**LEGEND**

	REGULAR DUTY ASPHALT
	HEAVY DUTY ASPHALT
	CONCRETE PAVING

ITALICS TEXT REPRESENTS EXISTING CONDITION  
 NON-ITALICS TEXT REPRESENTS PROPOSED CONDITION



C:\Users\Bramdon.Weber\Civil\Cloud Server - Weber\A1 Projects\2025\2025-157 Dairy Queen\2025-157 DWG\2025-157 DWG.dwg 05-04-2026 12:38:46 PM

