



A1.1

A1.2

A1.3

FRONT ELEVATION



A1.1

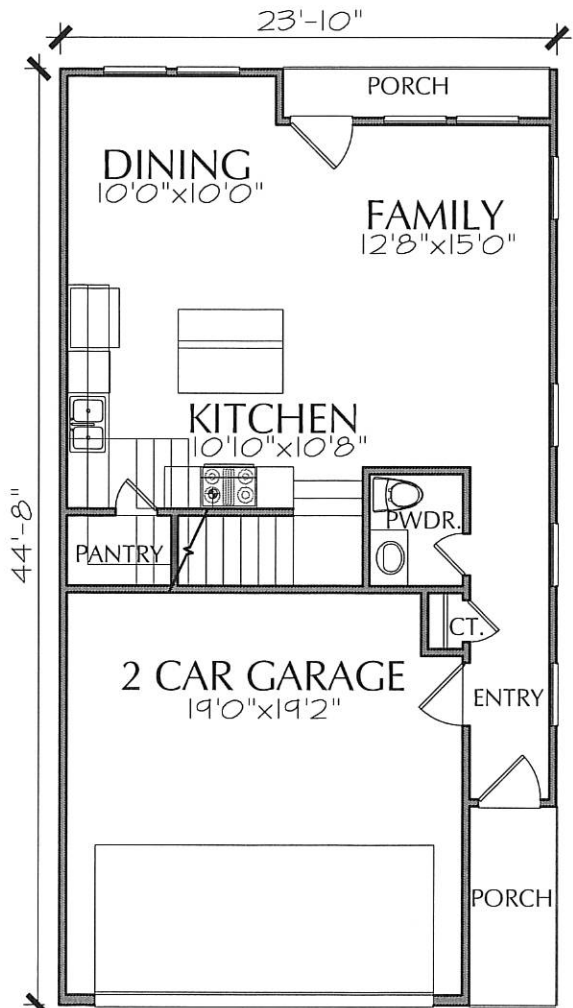
A1.2

A1.3

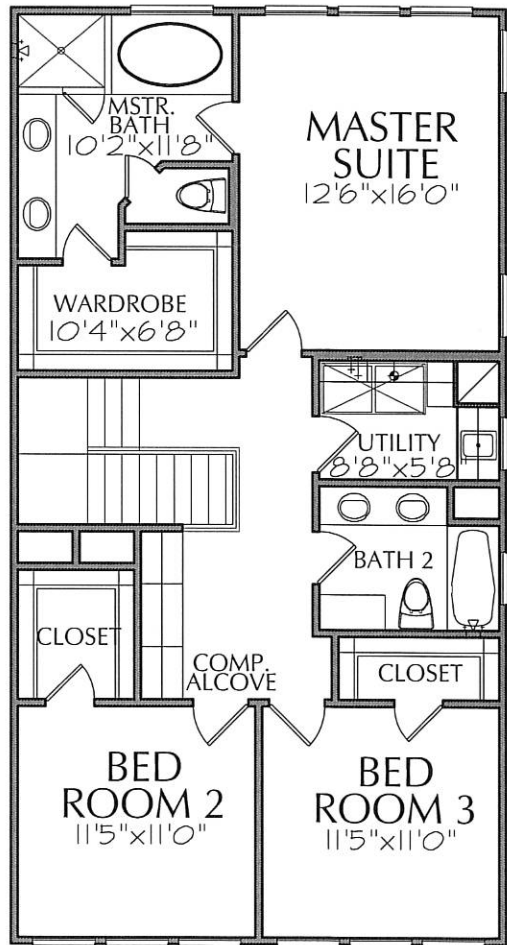
BACK ELEVATION



JOB#: E8005-A1.1-FR&BK
 LEVEL ONE: 617
 LEVEL TWO: 1006
 TOTAL LIVING: 1623
 OVERALL WIDTH: 23'-10"
 OVERALL DEPTH: 44'-8"
 1st FLOOR CLG.: 10'-1"U.O.N.
 2nd FLOOR CLG.: 9'-1"U.O.N.



FIRST FLOOR



SECOND FLOOR