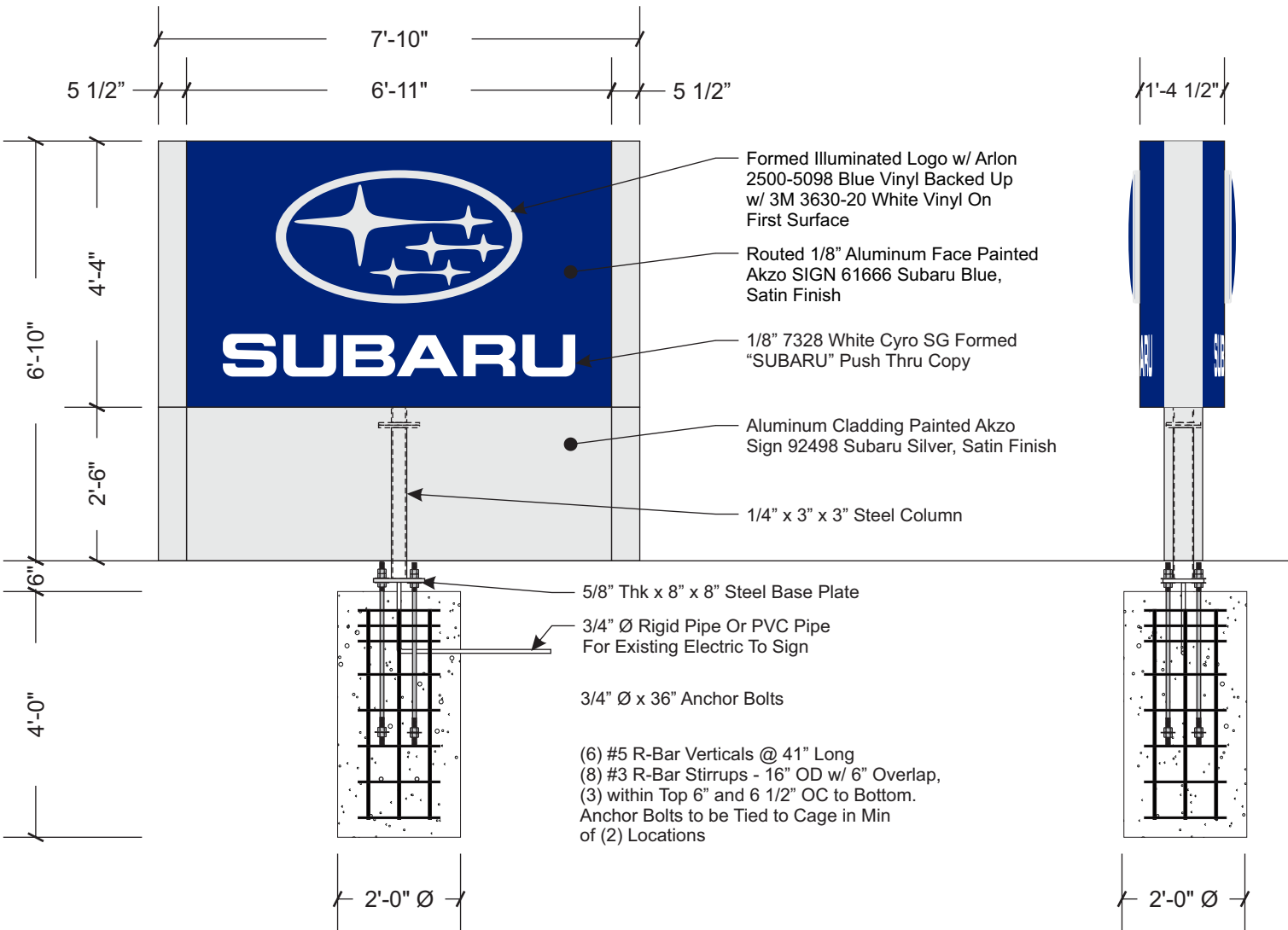


Photometrics - M30 Monument

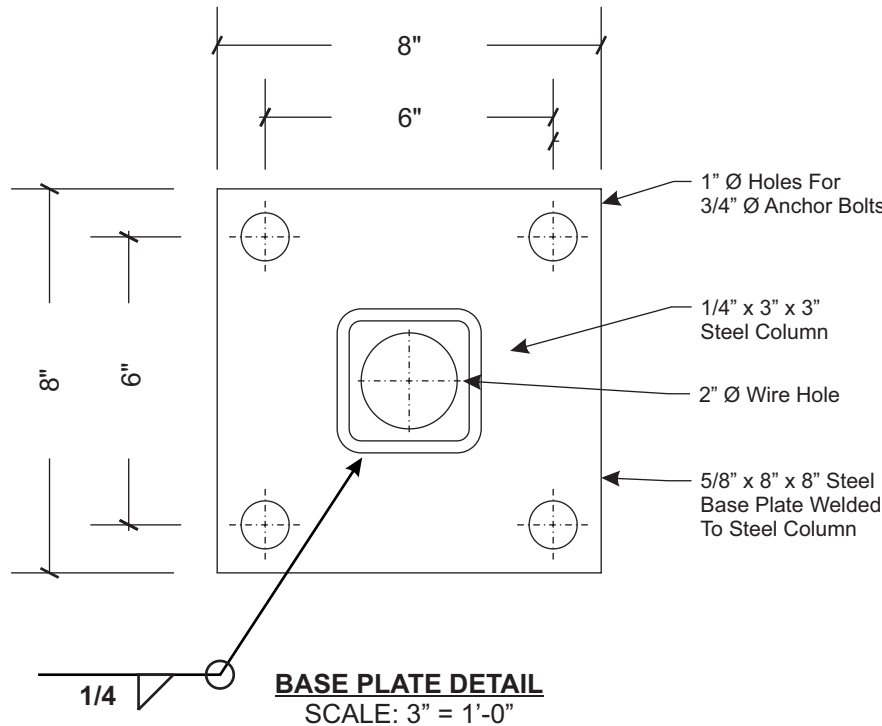
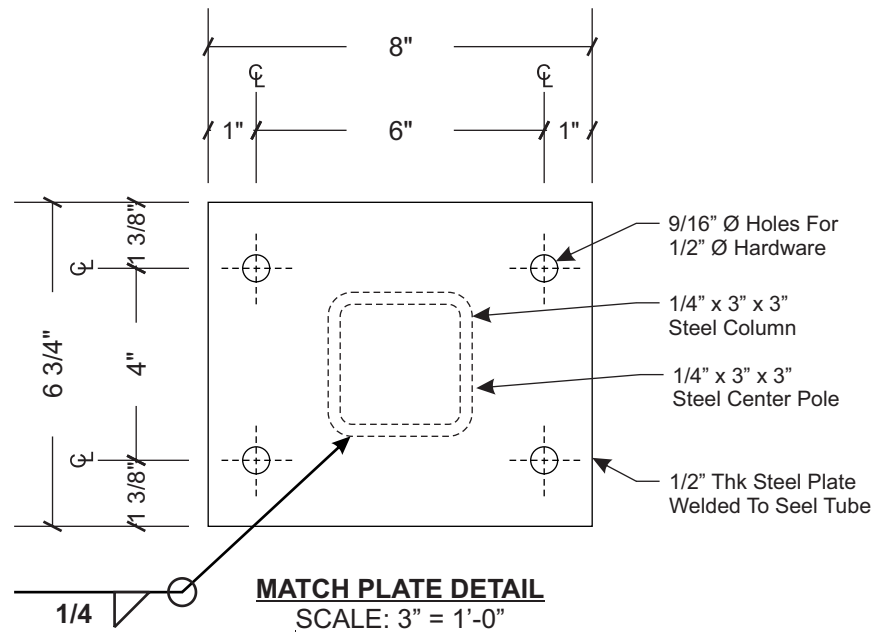
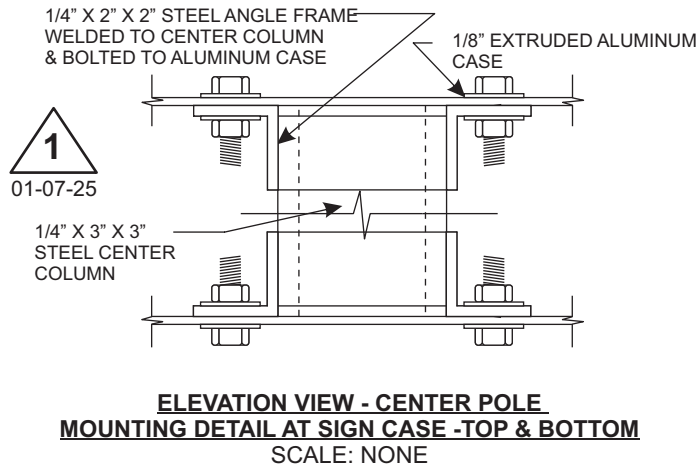
8 1/2" h Subaru Letters - 8' of led modules @ 225 lumens per foot produces 1800 lumens. Divide 1800 lumens by the square footage of the letters @ 2.66 Sq ft comes to 676.69 lumens per square foot. 75% light loss in the sign cabinet and 68% light loss at the 7328 white acrylic material, gives you a total output of 54.14 lumens per square foot at the Subaru letter faces.

Subaru logo starts w/ 14' of led modules @ 225 lumens per foot produces 3150 lumens. Divide 3150 lumens by the square footage of the logo 6.50 sq ft comes to 484.62 lumens per square foot. With 75% light loss at the cabinet because of logo size and shape, and the opaque portions of the face, limited light loss at the clear acrylic, 48% light loss at the 2447 Acrylic diffuser, gives us an output of 63 lumens per squarefoot at the logo Face.



FRONT ELEVATION  
SCALE: 3/8" = 1'-0"

SIDE VIEW  
SCALE: 3/8" = 1'-0"



**Electrical Load**  
1.16 Amps @ 120 Volts  
**Electrical Req'mts**  
(1) 20 Amp/120 Volt Circuits

HARDWARE LIST		
Description	Hardware	Qty
Match Plate Hardware	1/2" Ø x 2 1/2" Lg Hex Bolts w/ Nuts & (2) Flat (1) Lock Washer Per Bolt	4
Anchor Bolt Hardware	3/4" Ø x 36" Lg Bolt 5" Thread Both Ends (5) Nuts (3) Flat Washers Per Bolt	4

Note: Unless Otherwise Noted

- All Hardware to be SAE J429 - Grade 2
- All Anchor Bolts to be ANC F1554-GR55 - Grade 55
- All Anchor Bolt Nuts to be Heavy Hex Nuts A563A
- All Anchor Bolt Washers to be F844



- STANDARD MONUMENT NOTES:**
1. Sufficient Primary Circuit In Vicinity Of Sign By Others.
  2. Final Primary Hook-up By Sign Installer, Where Allowed By Local Codes.
  3. Sign Shall Be U.L. Listed.
  4. Soil Assumed To Be 250 psf/ft Lateral Bearing Pressure (psf/ft below natural grade).
  5. Concrete 3,000 PSI @ 28 Days.
  6. Reinforcing Steel Shall Be ASTM A615 GR-40.
  7. Structural Steel Shall Be ASTM A36.
  8. All Welds Shall Conform To A.W.S Standards.



PHILADELPHIASIGN  
BRINGING THE WORLD'S BRANDS TO LIFE

707 West Spring Garden Street  
Palmyra, New Jersey 08065

Phone: 856.829.1460  
Fax: 856.829.8549  
www.philadelphiasign.com

CUSTOMER:  
**SUBARU**

JOB NUMBER:  
**SUB401068.R / S120027**

SIGN TYPE:  
**M30 Monument w/  
Photometrics**

LOCATION:  
**1089 Interstate Parkway  
Akron, OH 44312**

DATE:  
**01/28/2026**

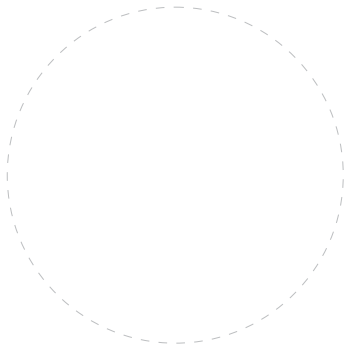
DRAWN BY:  
**BMO**

REVISION:  
Number: Date: By:

SHEET:  
**1 of 2** ENG DEPT

DWG NUMBER:  
**B116165**

ENGINEER SEAL:



ULTIMATE WIND SPEED 115 MPH  
EXPOSURE C

THIS IS AN ORIGINAL UNPUBLISHED DRAWING  
CREATED BY PSCO. IT IS SUBMITTED FOR YOUR  
PERSONAL USE IN CONJUNCTION WITH A PROJECT  
BEING PLANNED FOR YOU BY PSCO. IT IS NOT TO  
BE SHOWN TO ANYONE OUTSIDE YOUR  
ORGANIZATION NOR IS IT TO BE USED, COPIED,  
REPRODUCED, OR EXHIBITED IN ANY FASHION.



Note: This sign is intended to be installed in accordance with the requirements of Article 600 of the NFPA 2020 National Electrical Code and/or other Applicable local codes. This Includes proper grounding and bonding of the sign.

