

Exhibit A
Map of Development Property

2017-25

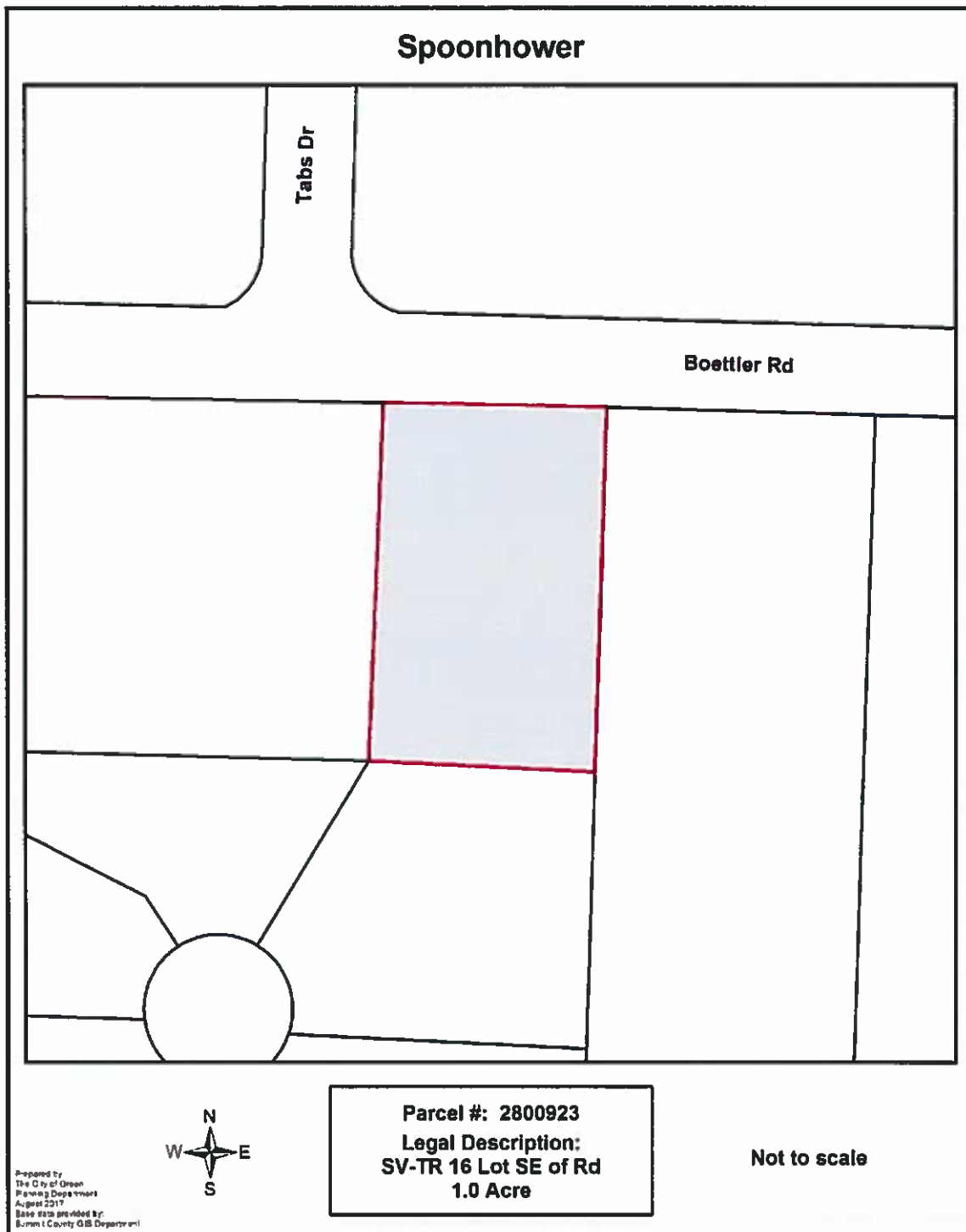


Exhibit B
Legal Description of Development Property

For: Spoonhower Properties LLC
4010 Boettler Road
Green, OH 44685

Parcel Number(s): 28-00923

The Development Property

SV-TR 16 LOT SE S OF RD 1.00A

Exhibit C
The Development Improvements

The Development Improvements consist of the following:

- (a) Construction of a 4,000 SF medical office building.
- (b) Estimated Value of New Construction: Construction Costs \$__M.
- (c) The facility's anticipated occupancy open _____.
- (d) Tax Year in which the improvements first appear on the tax list and duplicate:
January, 2018.

Exhibit D
The Public Improvements

The Public Improvements consist of, but are **not limited** to, the following:

- (a) Construction of improvements to Boettler Road not limited to, but including sidewalks, resurfacing, traffic management systems and street lighting.
- (b) Improvements to Arlington Road south of September Drive inclusive of intersection improvements, reconstruction, stormwater management, sidewalks and street lighting.
- (c) Improvements to the Boettler Road and Arlington Road intersection.
- (d) Construction of public improvements at Massillon Road and Boettler Road; and Corporate Woods Parkway and Boettler Road.