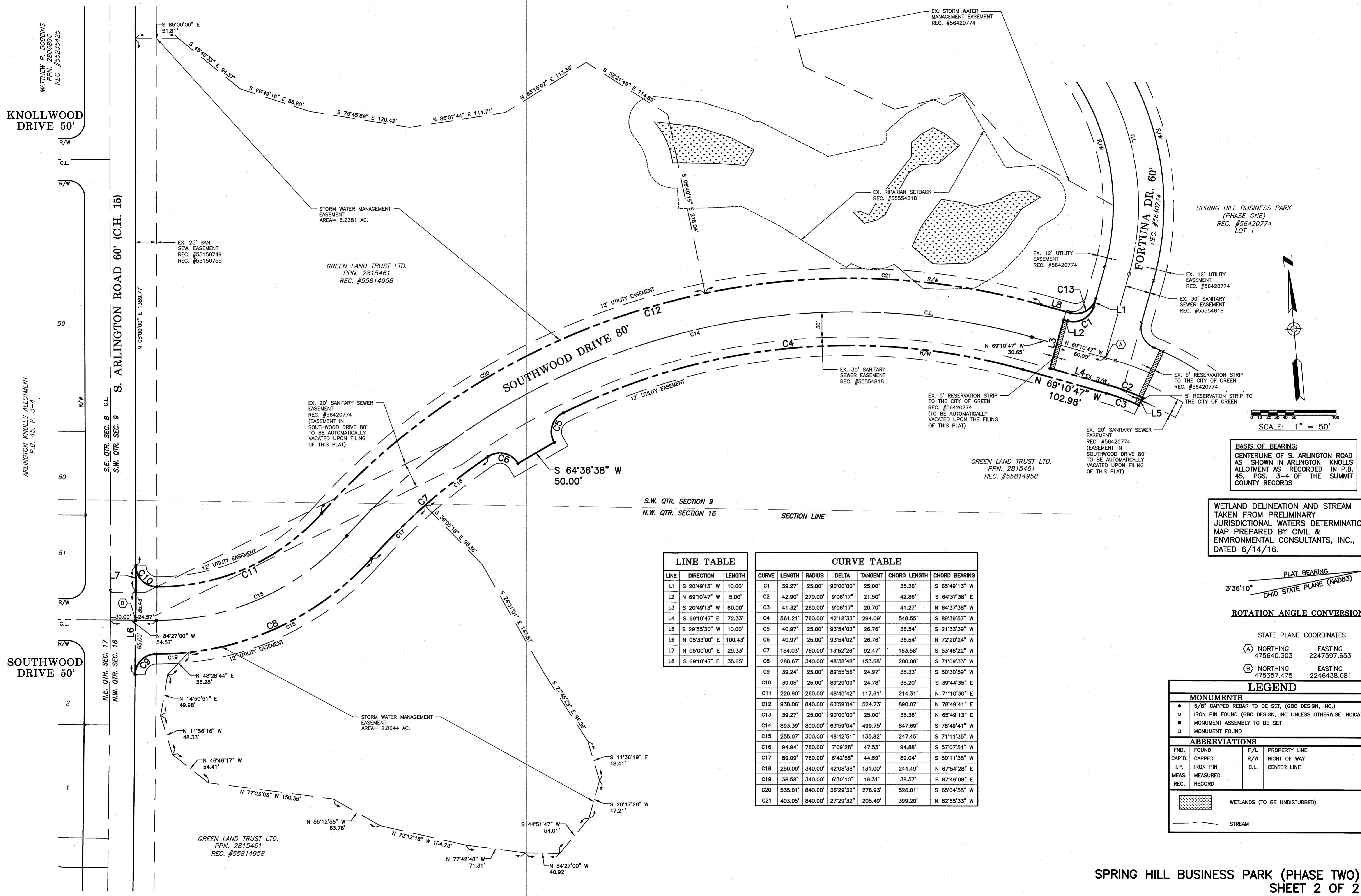


2022-R58 Exhibit A





BASIS OF BEARING:
CENTERLINE OF S. ARLINGTON ROAD
AS SHOWN IN ARLINGTON KNOLLS
ALLOTMENT AS RECORDED IN P.B.
45, PGS. 3-4 OF THE SUMMIT
COUNTY RECORDS

WETLAND DELINEATION AND STREAM
TAKEN FROM PRELIMINARY
JURISDICTIONAL WATERS DETERMINATION
MAP PREPARED BY CIVIL &
ENVIRONMENTAL CONSULTANTS, INC.,
DATED 6/14/16.

PLAT BEARING
3°36'10"
OHIO STATE PLANE (NAD83)

ROTATION ANGLE CONVERSION

STATE PLANE COORDINATES			
(A)	NORTHING	EASTING	
	475640.303	2247597.653	
(B)	NORTHING	EASTING	
	475357.475	2246438.081	

LEGEND			
MONUMENTS			
●	5/8" CAPPED REBAR TO BE SET, (GBC DESIGN, INC.)		
○	IRON PIN FOUND (GBC DESIGN, INC UNLESS OTHERWISE INDICATED)		
■	MONUMENT ASSEMBLY TO BE SET		
□	MONUMENT FOUND		
ABBREVIATIONS			
FND.	FOUND	P/L	PROPERTY LINE
CAP'D.	CAPPED	R/W	RIGHT OF WAY
I.P.	IRON PIN	C.L.	CENTER LINE
MEAS.	MEASURED		
REC.	RECORD		
		WETLANDS (TO BE UNDISTURBED)	
		STREAM	

LINE TABLE		
LINE	DIRECTION	LENGTH
L1	S 20°49'13" W	10.00'
L2	N 69°10'47" W	5.00'
L3	S 20°49'13" W	60.00'
L4	S 69°10'47" E	72.33'
L5	S 29°55'30" W	10.00'
L6	N 05°33'00" E	100.43'
L7	N 05°00'00" E	29.33'
L8	S 69°10'47" E	35.65'

CURVE TABLE						
CURVE	LENGTH	RADIUS	DELTA	TANGENT	CHORD LENGTH	CHORD BEARING
C1	39.27'	25.00'	90°00'00"	25.00'	35.36'	S 65°49'13" W
C2	42.90'	270.00'	9°06'17"	21.50'	42.86'	S 64°37'38" E
C3	41.32'	260.00'	9°06'17"	20.70'	41.27'	N 64°37'38" W
C4	561.21'	760.00'	42°18'33"	294.09'	548.55'	S 89°39'57" W
C5	40.97'	25.00'	93°54'02"	26.76'	36.54'	S 21°33'39" W
C6	40.97'	25.00'	93°54'02"	26.76'	36.54'	N 72°20'24" W
C7	184.03'	760.00'	13°52'26"	92.47'	183.58'	S 53°46'22" W
C8	288.67'	340.00'	48°38'48"	153.68'	280.08'	S 71°09'33" W
C9	39.24'	25.00'	89°55'56"	24.97'	35.33'	S 50°30'59" W
C10	39.05'	25.00'	89°29'09"	24.78'	35.20'	S 39°44'35" E
C11	220.90'	260.00'	48°40'42"	117.61'	214.31'	N 71°10'30" E
C12	938.08'	840.00'	63°59'04"	524.73'	890.07'	N 78°49'41" E
C13	39.27'	25.00'	90°00'00"	25.00'	35.36'	N 65°49'13" E
C14	893.39'	800.00'	63°59'04"	499.75'	847.69'	S 78°49'41" W
C15	255.07'	300.00'	48°42'51"	135.82'	247.45'	S 71°11'35" W
C16	94.94'	760.00'	7°09'28"	47.53'	94.88'	S 57°07'51" W
C17	89.09'	760.00'	6°42'58"	44.59'	89.04'	S 50°11'38" W
C18	250.09'	340.00'	42°08'38"	131.00'	244.49'	N 67°54'28" E
C19	38.58'	340.00'	6°30'10"	19.31'	38.57'	S 87°46'08" E
C20	535.01'	840.00'	36°29'32"	276.93'	526.01'	S 65°04'55" W
C21	403.05'	840.00'	27°29'32"	205.49'	399.20'	N 82°55'33" W