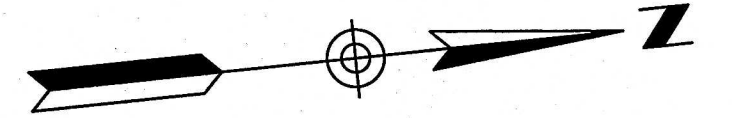


2022-R59 Exhibit A



SCALE: 1" = 100'

LEGEND		
MONUMENTS		
●	5/8" CAPPED REBAR TO BE SET, (GBC DESIGN, INC.)	
○	5/8" CAPPED REBAR FOUND, (GBC DESIGN, INC.)	
■	UNLESS OTHERWISE NOTED	
■	MONUMENT ASSEMBLY TO BE SET	
□	MONUMENT FOUND	
ABBREVIATIONS		
FND.	FOUND	P/L
CAP'D.	CAPPED	R/W
I.P.	IRON PIN	C.L.
MEAS.	MEASURED	
REC.	RECORD	
		PROPERTY LINE
		RIGHT OF WAY
		CENTER LINE

PLAT BEARING
3°36'10" OHIO STATE PLANE (NAD83)

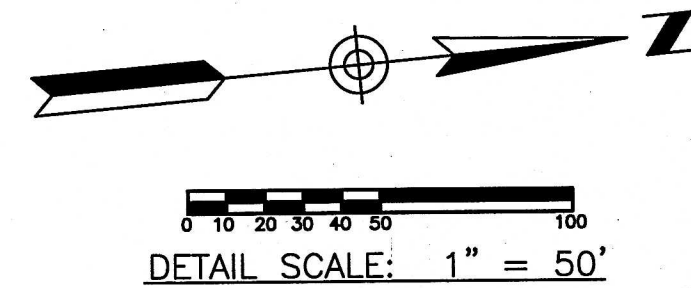
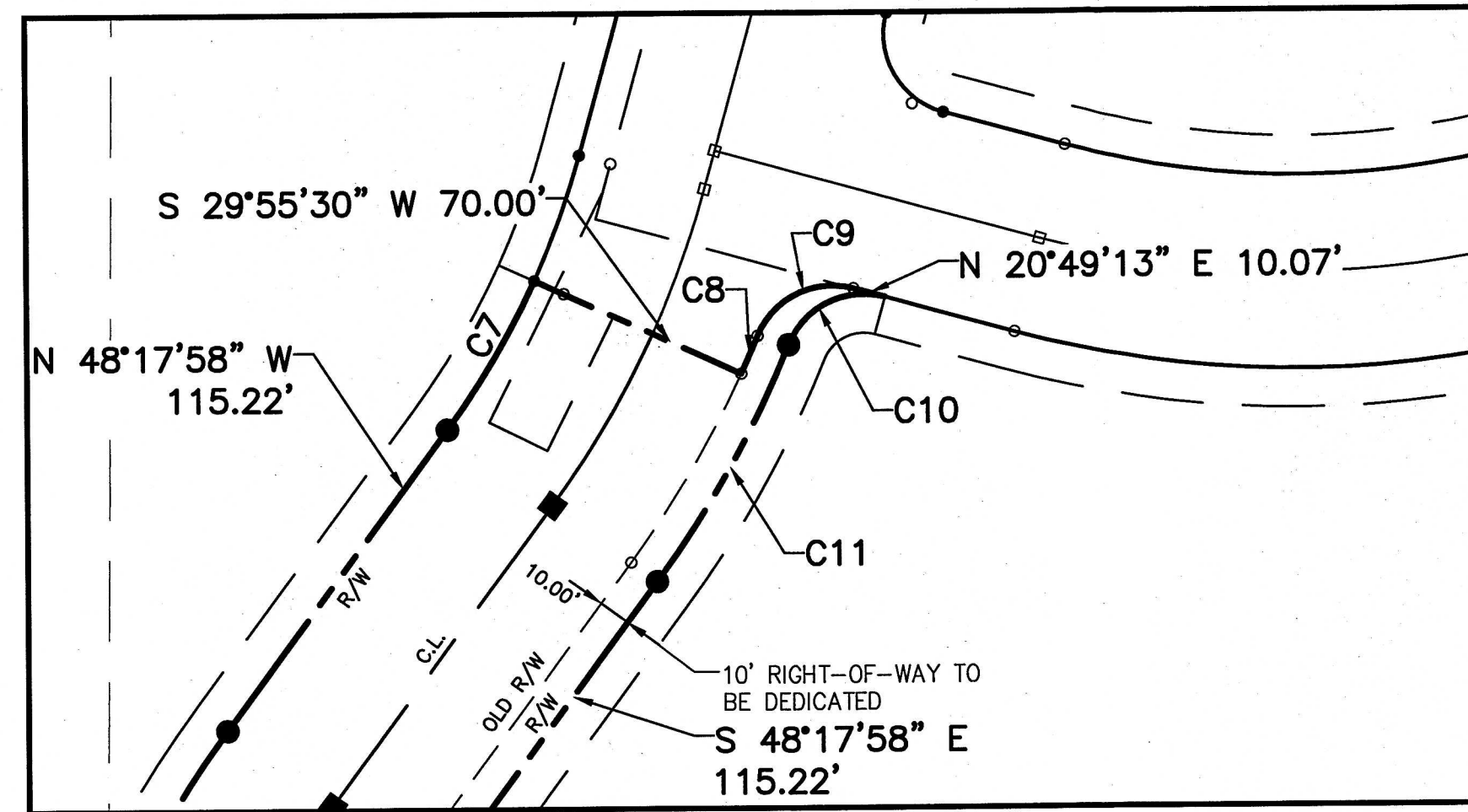
ROTATION ANGLE CONVERSION

STATE PLANE COORDINATES			
(A)	NORTHING	EASTING	
	475395.995	2249048.224	
(B)	NORTHING	EASTING	
	475586.166	2247705.631	

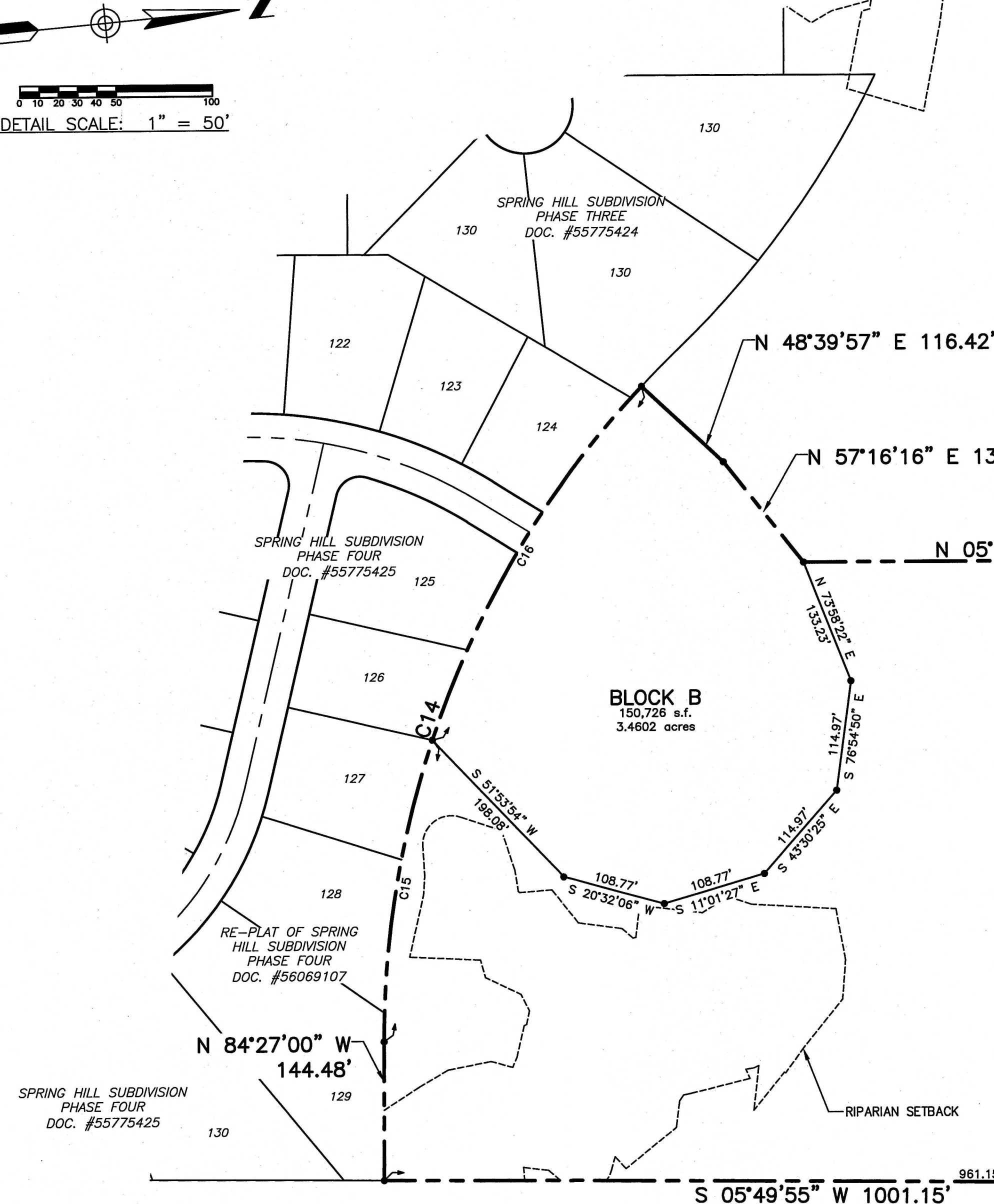
BASIS OF BEARING:
CENTERLINE OF S. ARLINGTON ROAD
AS SHOWN IN ARLINGTON KNOLLS
ALLOTMENT AS RECORDED IN P.B.
45, PGS. 3-4 OF THE SUMMIT
COUNTY RECORDS

WETLAND DELINEATION AND STREAM
TAKEN FROM PRELIMINARY
JURISDICTIONAL WATERS DETERMINATION
MAP PREPARED BY CIVIL &
ENVIRONMENTAL CONSULTANTS, INC.,
DATED 6/14/16.

CURVE TABLE						
CURVE	LENGTH	RADIUS	DELTA	TANGENT	CHORD LENGTH	CHORD BEARING
C1	47.67'	300.00'	9°06'17"	23.89'	47.62'	N 64°37'38" W
C2	61.66'	300.00'	11°46'32"	30.94'	61.55'	N 54°11'14" W
C3	126.87'	300.00'	24°13'52"	64.40'	125.93'	S 60°24'54" E
C4	204.42'	1000.00'	11°42'44"	102.57'	204.06'	S 78°23'12" E
C5	212.60'	1040.00'	11°42'44"	106.67'	212.23'	N 78°23'12" W
C6	143.79'	340.00'	24°13'52"	72.99'	142.72'	N 60°24'54" W
C8	12.68'	330.00'	2°12'03"	6.34'	12.68'	N 61°10'32" W
C9	36.26'	25.00'	83°05'46"	22.16'	33.16'	S 20°43'40" E
C10	36.34'	25.00'	83°17'10"	22.23'	33.22'	S 20°49'22" E
C11	84.07'	340.00'	14°10'00"	42.25'	83.85'	N 55°22'57" W
C12	109.96'	260.00'	24°13'52"	55.81'	109.14'	S 60°24'54" E
C13	196.24'	960.00'	11°42'44"	98.46'	195.90'	S 78°23'12" E
C14	752.52'	1000.00'	43°06'57"	395.08'	734.89'	S 62°53'31" E
C15	319.88'	1000.00'	18°19'00"	161.22'	318.32'	S 75°17'30" E
C16	432.83'	1000.00'	24°47'58"	219.86'	429.46'	S 53°44'01" E



DETAIL SCALE: 1" = 50'



BEAMER FAMILY LIMITED PARTNERSHIP;
JACOBS FAMILY LIMITED PARTNERSHIP;
LINGER FAMILY LIMITED PARTNERSHIP;
CHRISTINE JACOBS
P.P.N. 2803279
O.R. 1927, PG. 425

GREEN COMMUNITY
IMPROVEMENT CORPORATION
P.P.N. 2816737
INST. #56610001