

2019-R26
EXHIBIT "A"



Ganley Ford, Inc.
2835 Barber Road, Barberton, Ohio, 442031003
Office: 330-745-9081
Fax: 330-745-4054

Customer Proposal

\$ 39,573.36

Prepared for:

Louie Yankovich
City of Green
5383 Massillon Rd
Green, OH 44232
Office: 330-896-5503
Email: lyankovich@cityofgreen.org

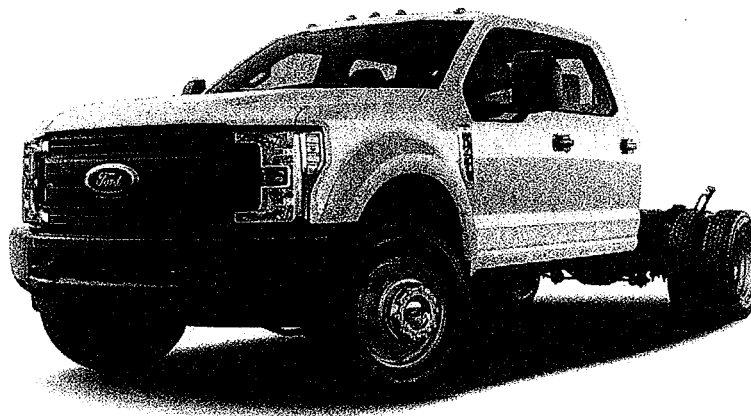
Prepared by:

Tom Stancil
Office: 330-701-1449
Email: tstancil@ganleyauto.com

Date: 03/15/2019

Vehicle: 2019 F-550 Chassis XL
4x4 SD Crew Cab 179" WB DRW

Quote ID: 60012





Ganley Ford, Inc.
2835 Barber Road, Barberton, Ohio, 442031003
Office: 330-745-9081
Fax: 330-745-4054

Louie Yankovich
City of Green
5383 Massillon Rd
Green, OH 44232
Office: 330-896-5503
Email: lyankovich@cityofgreen.org

Re: Vehicle Proposal

Dear Louie,

Thank you very much for your interest in acquiring a vehicle from our dealership. We concur that your interest is well deserved. We hope that an outstanding product lineup and our dedication to customer service will enhance your ownership experience should you decide to buy a vehicle from us.

Attached, please find additional information that I hope will assist you in making a more informed decision. Please feel free to contact me at any time as I would truly appreciate the opportunity to be of service to you.

Sincerely,

Tom Stancil
Commercial Manager
330-701-1449
tstancil@ganleyauto.com



Ganley Ford, Inc.
2835 Barber Road, Barberton, Ohio, 442031003
Office: 330-745-9081
Fax: 330-745-4054

2019 F-550 Chassis, SD Crew Cab
4x4 SD Crew Cab 179" WB DRW XL(W5H)
Price Level: 950 Quote ID: 60012

Selected Equipment & Specs

Dimensions

Exterior length: 265.2" * Cab to axle: 60.0" * Exterior width: 80.0" * Exterior height: 81.8" * Wheelbase: 179.0" * Front track: 74.8" * Rear track: 74.0" * Turning radius: 25.6' * Rear tire outside width: 93.9" * Min ground clearance: 8.2" * Front legroom: 43.9" * Rear legroom: 43.6" * Front headroom: 40.8" * Rear headroom: 40.4" * Front hiproom: 62.5" * Rear hiproom: 64.7" * Front shoulder room: 66.7" * Rear shoulder room: 65.9" * Passenger volume: 131.7cu.ft. * Cargo volume: 52.1cu.ft. * Maximum cargo volume: 52.1cu.ft.

Powertrain

288hp 6.8L SOHC 30 valve V-10 engine with SMPI * Recommended fuel : regular unleaded * federal * TorqShift 6 speed automatic transmission with overdrive * Part-time * Fuel Economy Cty: N/A * Fuel Economy Highway: N/A * Transmission PTO provision

Suspension/Handling

Front Mono-beam non-independent suspension with anti-roll bar, HD shocks * Rear DANA M300 rigid axle leaf spring suspension with anti-roll bar, HD shocks * Firm ride Suspension * Hydraulic power-assist re-circulating ball Steering * Front and rear 19.5 x 6 argent steel wheels * LT225/70SR19.5 GBSW AS front and rear tires * Dual rear wheels

Body Exterior

4 doors * Conventional left rear passenger * Conventional right rear passenger * Driver and passenger power remote heated, manual folding door mirrors with turn signal indicator * Turn signal indicator in mirrors * Black door mirrors * Black bumpers * Trailer harness * Clearcoat paint * Front and rear 19.5 x 6 wheels * 2 front tow hook(s)

Convenience

Manual air conditioning with air filter * Power windows * Driver and passenger 1-touch up * Driver and passenger 1-touch down * Remote power door locks with 2 stage unlock and illuminated entry * Manual tilt steering wheel * Manual telescopic steering wheel * Day-night rearview mirror * 2 1st row LCD monitors * Front cupholders * Passenger visor mirror * Full overhead console * Driver and passenger door bins * Rear door bins * Upfitter switches

Seats and Trim

Seating capacity of 6 * Front 40-20-40 split-bench seat * 4-way driver seat adjustment * Manual driver lumbar support * 4-way passenger seat adjustment * Centre front armrest with storage * 60-40 folding rear split-bench seat

Entertainment Features

AM/FM stereo radio * 4 speakers * Fixed antenna

Lighting, Visibility and Instrumentation

Halogen aero-composite headlights * Delay-off headlights * Fully automatic headlights * Variable intermittent front windshield wipers * Light tinted windows * Front and rear reading lights * Tachometer * Oil pressure gauge * Outside temperature display * Camera(s) - rear * Trip computer * Trip odometer

Safety and Security

4-wheel ABS brakes * Brake assist * 4-wheel disc brakes * Driveline traction control * Dual front impact airbag supplemental restraint system * Dual seat mounted side impact airbag supplemental restraint system * Safety Canopy System curtain 1st and 2nd row overhead airbag supplemental restraint system * Remote activated perimeter/approach lighting * Power remote door locks with 2 stage unlock and panic alarm * Security system with SecuriLock immobilizer * MyKey restricted driving mode * Manually adjustable front head restraints * 3 manually adjustable rear head restraints

Dimensions

General Weights

Curb	7,283 lbs.	GVWR	18,000 lbs.
Payload	10,570 lbs.		

Front Weights

Front GAWR	7,000 lbs.	Front curb weight	4,320 lbs.
------------	------------	-------------------	------------

Prices and content availability as shown are subject to change and should be treated as estimates only. Actual base vehicle, package and option pricing may vary from this estimate because of special local pricing, availability or pricing adjustments not reflected in the dealer's computer system. See salesperson for the most current information.

Prepared for: Louie Yankovich, City of Green
By: Tom Stancil Date: 03/15/2019



Ganley Ford, Inc.
2835 Barber Road, Barberton, Ohio, 442031003
Office: 330-745-9081
Fax: 330-745-4054

2019 F-550 Chassis, SD Crew Cab
4x4 SD Crew Cab 179" WB DRW XL(W5H)
Price Level: 950 Quote ID: 60012

Selected Equipment & Specs (cont'd)

Front axle capacity	7,000 lbs.	Front spring rating	7,000 lbs.
Front tire/wheel capacity	7,500 lbs.		
Rear Weights			
Rear GAWR	13,660 lbs.	Rear curb weight	2,963 lbs.
Rear axle capacity	13,660 lbs.	Rear spring rating	13,660 lbs.
Rear tire/wheel capacity	15,000 lbs.		
Trailer Type			
Harness	Yes	Brake controller	Yes
Trailer sway control	Yes		
General Trailing			
5th-wheel towing capacity	19900 lbs.	Gooseneck towing capacity	19900 lbs.
Towing capacity	18500 lbs.	GCWR	28000 lbs.
Fuel Tank type			
Capacity	26.5 gal.		
Off Road			
Min ground clearance	8 "		
Interior cargo			
Cargo volume	52.1 cu.ft.	Maximum cargo volume	52.1 cu.ft.
Rear Frame			
Height loaded	29 "	Height unloaded	34 "
Powertrain			
Engine Type			
Block material	Iron	Cylinders	V-10
Head material	Aluminum	Ignition	Spark
Injection	Sequential MPI	Liters	6.8L
Orientation	Longitudinal	Recommended fuel	Regular unleaded
Valves per cylinder	3	Valvetrain	SOHC
Engine Spec			
Bore	3.55"	Compression ratio	9.2:1
Displacement	415 cu.in.	Stroke	4.16"
Engine Power			
Output	288 HP @ 4,000 RPM	Torque	424 ft.-lb @ 3,000 RPM
Alternator			
Type	HD	Amps	240
Battery			
Amp hours	78	Cold cranking amps	750
Run down protection	Yes	Type	HD
Transmission			
Electronic control	Yes	Lock-up	Yes
Overdrive	Yes	Speed	6
Type	Automatic		
Transmission Gear Ratios			
1st	3.974	2nd	2.318

Prices and content availability as shown are subject to change and should be treated as estimates only. Actual base vehicle, package and option pricing may vary from this estimate because of special local pricing, availability or pricing adjustments not reflected in the dealer's computer system. See salesperson for the most current information.

Prepared for: Louie Yankovich, City of Green
By: Tom Stancil Date: 03/15/2019



Ganley Ford, Inc.
2835 Barber Road, Barberton, Ohio, 442031003
Office: 330-745-9081
Fax: 330-745-4054

2019 F-550 Chassis, SD Crew Cab
4x4 SD Crew Cab 179" WB DRW XL(W5H)
Price Level: 950 Quote ID: 60012

Selected Equipment & Specs (cont'd)

3rd	1.516	4th	1.149
5th	0.858	6th	0.674
Reverse Gear ratios	3.128		
<i>Transmission Torque Converter</i>			
Stall ratio	1.90		
<i>Transmission Extras</i>			
Driver selectable mode	Yes	Sequential shift control	SelectShift
Oil cooler	Regular duty	PTO provision	Yes
<i>Drive Type</i>			
4wd type	Part-time	Type	Four-wheel
<i>Drive Feature</i>			
Traction control	Driveline	Power take-off provision	Yes
Locking hub control	Manual	Transfer case shift	Manual
<i>Drive Axle</i>			
Ratio	4.88		
<i>Exhaust</i>			
Material	Stainless steel	System type	Single
<i>Emissions</i>			
CARB	Federal		
<i>Fuel Economy</i>			
Fuel type	Gasoline		
Driveability			
<i>Brakes</i>			
ABS	4-wheel	ABS channels	3
Type	4-wheel disc	Vented discs	Front and rear
<i>Brake Assistance</i>			
Brake assist	Yes		
<i>Suspension Control</i>			
Ride	Firm		
<i>Front Suspension</i>			
Independence	Mono-beam non-independent	Anti-roll bar	Regular
<i>Front Spring</i>			
Type	Coil	Grade	HD
<i>Front Shocks</i>			
Type	HD		
<i>Rear Suspension</i>			
Independence	DANA M300 rigid axle	Type	Leaf
Anti-roll bar	Regular		
<i>Rear Spring</i>			
Type	Leaf	Grade	HD
<i>Rear Shocks</i>			

Prices and content availability as shown are subject to change and should be treated as estimates only. Actual base vehicle, package and option pricing may vary from this estimate because of special local pricing, availability or pricing adjustments not reflected in the dealer's computer system. See salesperson for the most current information.

Prepared for: Louie Yankovich, City of Green
By: Tom Stancil Date: 03/15/2019



Ganley Ford, Inc.
2835 Barber Road, Barberton, Ohio, 442031003
Office: 330-745-9081
Fax: 330-745-4054

2019 F-550 Chassis, SD Crew Cab
4x4 SD Crew Cab 179" WB DRW XL(W5H)
Price Level: 950 Quote ID: 60012

Selected Equipment & Specs (cont'd)

Type	HD		
Steering			
Activation	Hydraulic power-assist	Type	Re-circulating ball
Steering Specs			
# of wheels	2		
Exterior			
Front Wheels			
Diameter	19.5"	Width	6.00"
Rear Wheels			
Diameter	19.5"	Width	6.00"
Dual	Yes		
Front and Rear Wheels			
Appearance	Argent	Material	Steel
Front Tires			
Aspect	70	Diameter	19.5"
Sidewalls	BSW	Speed	S
Tread	AS	Type	LT
Width	225mm	LT load rating	G
RPM	647		
Rear Tires			
Aspect	70	Diameter	19.5"
Sidewalls	BSW	Speed	S
Tread	AS	Type	LT
Width	225mm	LT load rating	G
RPM	647		
Wheels			
Front track	74.8"	Rear track	74.0"
Turning radius	25.6'	Wheelbase	179.0"
Rear tire outside width	93.9"		
Body Features			
Front license plate bracket	Yes	Front splash guards	Yes
Body material	Aluminum	Side impact beams	Yes
Front tow hook(s)	2		
Body Doors			
Door count	4	Left rear passenger	Conventional
Right rear passenger	Conventional		
Exterior Dimensions			
Length	265.2"	Body width	80.0"
Body height	81.8"	Cab to axle	60.0"
Axle to end of frame	47.2"	Frame section modulus	12.7cu.in.
Frame yield strength (psi)	50000.0	Frame rail width	34.2"
Front bumper to front axle	38.3"	Cab to end of frame	107.2"
Front bumper to back of cab	158.1"		

Safety

Prices and content availability as shown are subject to change and should be treated as estimates only. Actual base vehicle, package and option pricing may vary from this estimate because of special local pricing, availability or pricing adjustments not reflected in the dealer's computer system. See salesperson for the most current information.

Prepared for: Louie Yankovich, City of Green
By: Tom Stancil Date: 03/15/2019



Ganley Ford, Inc.
2835 Barber Road, Barberton, Ohio, 442031003
Office: 330-745-9081
Fax: 330-745-4054

2019 F-550 Chassis, SD Crew Cab
4x4 SD Crew Cab 179" WB DRW XL(W5H)
Price Level: 950 Quote ID: 60012

Selected Equipment & Specs (cont'd)

Airbags

Driver front-impact	Yes	Driver side-impact	Seat mounted
Overhead... Safety Canopy System curtain 1st and 2nd row		Passenger front-impact	Yes
Passenger side-impact	Seat mounted		

Seatbelt

Height adjustable

Front

Security

Immobilizer	SecuriLock	Panic alarm	Yes
Restricted driving mode	MyKey		

Seating

Passenger Capacity

Capacity

6

Front Seats

Split	40-20-40	Type	Split-bench
-------------	----------	------------	-------------

Driver Seat

Fore/aft	Manual	Reclining	Manual
Way direction control	4	Lumbar support	Manual

Passenger seat

Fore/aft	Manual	Reclining	Manual
Way direction control	4		

Front Head Restraint

Control	Manual	Type	Adjustable
---------------	--------	------------	------------

Front Armrest

Centre	Yes	Storage	Yes
--------------	-----	---------------	-----

Rear Seats

Descriptor	Split-bench	Facing	Front
Folding	60-40	Folding position	Fold-up cushion
Type	Fixed		

Rear Head Restraints

Control	Manual	Type	Adjustable
Number	3		

Front Seat Trim

Material	Vinyl	Back material	Vinyl
----------------	-------	---------------------	-------

Rear Seat Trim Group

Material	Vinyl	Back material	Carpet
----------------	-------	---------------------	--------

Convenience

AC And Heat Type

Air conditioning	Manual	Air filter	Yes
Underseat ducts	Yes		

Audio System

Prices and content availability as shown are subject to change and should be treated as estimates only. Actual base vehicle, package and option pricing may vary from this estimate because of special local pricing, availability or pricing adjustments not reflected in the dealer's computer system. See salesperson for the most current information.

Prepared for: Louie Yankovich, City of Green
By: Tom Stancil Date: 03/15/2019



Ganley Ford, Inc.
2835 Barber Road, Barberton, Ohio, 442031003
Office: 330-745-9081
Fax: 330-745-4054

2019 F-550 Chassis, SD Crew Cab
4x4 SD Crew Cab 179" WB DRW XL(W5H)
Price Level: 950 Quote ID: 60012

Selected Equipment & Specs (cont'd)

Radio	AM/FM stereo	Radio grade	Regular
Seek-scan	Yes		
Audio Speakers			
Speaker type	Regular	Speakers	4
Audio Antenna			
Type	Fixed		
LCD Monitors			
1st row	2	Primary monitor size (inches)	2.3
Convenience Features			
Retained accessory power	Yes	12V DC power outlet	2
Back-up alarm	Yes	Upfitter switches	Yes
Door Lock Activation			
Type	Power with 2 stage unlock	Remote	Keyfob (all doors)
Integrated key/remote	Yes		
Instrumentation Type			
Display	Analog		
Instrumentation Gauges			
Tachometer	Yes	Oil pressure	Yes
Engine temperature	Yes	Transmission fluid temp	Yes
Engine hour meter	Yes		
Instrumentation Warnings			
Oil pressure	Yes	Engine temperature	Yes
Battery	Yes	Lights on	Yes
Key	Yes	Low fuel	Yes
Door ajar	Yes	Service interval	Yes
Brake fluid	Yes		
Instrumentation Displays			
Clock	In-radio display	Exterior temp	Yes
Systems monitor	Yes	Camera(s) - rear	Yes
Instrumentation Feature			
Trip computer	Yes	Trip odometer	Yes
Steering Wheel Type			
Material	Urethane	Tilting	Manual
Telescoping	Manual		
Front Side Windows			
Window 1st row activation	Power		
Windows Rear Side			
2nd row activation	Power		
Window Features			
1-touch down	Driver and passenger	1-touch up	Driver and passenger
Tinted	Light		
Front Windshield			
Wiper	Variable intermittent		

Prices and content availability as shown are subject to change and should be treated as estimates only. Actual base vehicle, package and option pricing may vary from this estimate because of special local pricing, availability or pricing adjustments not reflected in the dealer's computer system. See salesperson for the most current information.

Prepared for: Louie Yankovich, City of Green
By: Tom Stancil Date: 03/15/2019



Ganley Ford, Inc.
2835 Barber Road, Barberton, Ohio, 442031003
Office: 330-745-9081
Fax: 330-745-4054

2019 F-550 Chassis, SD Crew Cab
4x4 SD Crew Cab 179" WB DRW XL(W5H)
Price Level: 950 Quote ID: 60012

Selected Equipment & Specs (cont'd)

Rear Windshield

Window Fixed

Interior

Passenger Visor

Mirror Yes

Rear View Mirror

Day-night Yes

Headliner

Coverage Full Material Cloth

Floor Trim

Coverage Full Covering Vinyl/rubber

Trim Feature

Gear shift knob Urethane Interior accents Chrome

Lighting

Dome light type Fade Front reading Yes
Illuminated entry Yes Rear reading Yes
Variable IP lighting Yes

Overhead Console Storage

Storage Yes Type Full

Storage

Driver door bin Yes Front Beverage holder(s) Yes
Glove box Locking Passenger door bin Yes
Illuminated Yes Instrument panel Bin
Dashboard Covered Rear door bins Yes

Legroom

Front 43.9" Rear 43.6"

Headroom

Front 40.8" Rear 40.4"

Hip Room

Front 62.5" Rear 64.7"

Shoulder Room

Front 66.7" Rear 65.9"

Interior Volume

Passenger volume 131.7 cu.ft.

Prices and content availability as shown are subject to change and should be treated as estimates only. Actual base vehicle, package and option pricing may vary from this estimate because of special local pricing, availability or pricing adjustments not reflected in the dealer's computer system. See salesperson for the most current information.

Prepared for: Louie Yankovich, City of Green
By: Tom Stancil Date: 03/15/2019



Ganley Ford, Inc.
2835 Barber Road, Barberton, Ohio, 442031003
Office: 330-745-9081
Fax: 330-745-4054

2019 F-550 Chassis, SD Crew Cab
4x4 SD Crew Cab 179" WB DRW XL(W5H)
Price Level: 950 Quote ID: 60012

Warranty - Standard Equipment & Specs

Warranty

<i>Basic</i>		
Distance	36,000 miles	Months 36 months
<i>Powertrain</i>		
Distance	60,000 miles	Months 60 months
<i>Corrosion Perforation</i>		
Distance	Unlimited miles	Months 60 months
<i>Roadside Assistance</i>		
Distance	60,000 miles	Months 60 months

Prices and content availability as shown are subject to change and should be treated as estimates only. Actual base vehicle, package and option pricing may vary from this estimate because of special local pricing, availability or pricing adjustments not reflected in the dealer's computer system. See salesperson for the most current information.

Prepared for: Louie Yankovich, City of Green
By: Tom Stancil Date: 03/15/2019



Ganley Ford, Inc.
2835 Barber Road, Barberton, Ohio, 442031003
Office: 330-745-9081
Fax: 330-745-4054

2019 F-550 Chassis, SD Crew Cab
4x4 SD Crew Cab 179" WB DRW XL(W5H)
Price Level: 950 Quote ID: 60012

Pricing - Single Vehicle

		MSRP
<i>Vehicle Pricing</i>		
Base Vehicle Price		\$45,785.00
Options & Colors		\$2,540.00
Upfitting		\$0.00
Destination Charge		\$1,595.00
<i>Discount Adjustments</i>		
Discount		-\$10,366.14
Subtotal		\$39,553.86
<i>Post-Tax Adjustments</i>		
Code	Description	
Titling	Titling	\$19.50
Total		\$39,573.36

Customer Signature

Acceptance Date

Prices and content availability as shown are subject to change and should be treated as estimates only. Actual base vehicle, package and option pricing may vary from this estimate because of special local pricing, availability or pricing adjustments not reflected in the dealer's computer system. See salesperson for the most current information.

Prepared for: Louie Yankovich, City of Green
By: Tom Stancil Date: 03/15/2019

