



Quote 204532-01

January 29, 2020

CITY OF GREEN/FINANCE

5383 MASSILLON ROAD
GREEN, Ohio 44232-0278
Sourcewell member #43084
Ohio Cat contract 032119-CAT



Dear Dave,

Thank you for your interest in Ohio CAT and Caterpillar products for your business needs. This quotation is valid for 30 days, after which time we reserve the right to re-quote. If there are any questions, please do not hesitate to contact me.

One (1) New Caterpillar Model: 926M Wheel Loader with all standard equipment in addition to the additional specifications listed below:

STOCK NUMBER: H16999

SERIAL NUMBER: 0LTE07523

YEAR: 2020

SMU: 3

One (1) New Caterpillar Model: 926M Wheel Loader with all standard equipment in addition to the additional specifications listed below:

MACHINE SPECIFICATIONS

926M WHEEL LOADER	536-5300
KIT,SERIALIZED TECHNICAL MEDIA	0P-2491
DIFFERENTIAL, OPEN REAR	333-6528
RADIO, READY	342-0130
COUNTERWEIGHT, HEAVY	348-2579
RIDE CONTROL	430-2859
PREP PACK, UNITED STATES	430-2943
STEERING, STANDARD	430-2996
ENGINE AR	430-3038
WARNING, BEACON, LED STROBE	333-1425
PACK, DOMESTIC TRUCK	0P-0210
HYDRAULICS, STANDARD	536-5282
LIGHTS, ROADING, HALOGEN, RH	541-3066
HYDRAULICS, 3V, CPLR READY, SL	536-5323
CAB, DELUXE	536-5309
LIGHTS, STD HALOGEN	488-1112
QUICK COUPLER, FUSION	536-5313
JUMPER LINES, NONE	536-5339
LINES, AUX 3RD, STD LIFT	530-1623
CONTROL GP,PAYLOAD,DEMO 250 HR	566-4597
CAMERA, REAR VIEW	377-5635
ENVIRONMENT, MEDIUM DEBRIS	536-5340
WEATHER, COLD START 120V	454-0610
SEAT, STANDARD	563-5966
FENDERS, DEFLECTORS	419-8850
TOOLBOX AUX	491-7922
LANE 3 ORDER	0P-9003
TIRES, 20.5R25 TI MXL * L3	376-0827
PRODUCT LINK, CELLULAR PLE641	565-0909
LOADER,ATTACHMENT - H22615A	360-3322
CUTTING EDGE, BOLT ON4 PIECE - H22615A	8E-4566
3RD JUMPER LINES INSTALLED	
CAT SWL MATERIAL HANDLING ARM	
ADDITIONAL ITEMS REQUESTED:	

1-CAT GRAPPLE BUCKET AGED INVENTORY IN STOCK \$14,500
1-WERK-BRAU 60" HYRAULIC FORKS WITH 60" CARRIAGE \$9,250
1-AUTO-LUBE INSTALLED \$9,500

LIST PRICE	\$220,930.00
EXT WARRANTY	Included
LESS SOURCEWELL DISCOUNT OF 24% AND OHIO CAT SPECIAL DISCOUNT OF 6%	\$68,488.30
BALANCE, INCLUDING THE ADDITIONAL ITEMS REQUESTED.	\$185,691.70

WARRANTY

Standard Warranty: 12 Month/unlimited hours Full Machine* All standard warranties include travel time & mileage for first twelve months. Scheduled Oil sampling is required during entire warranty period.

Extended Coverage: 926-60 MO/2500 HR PREMIER (Tier 4)

Thank you for your interest in Ohio CAT and Caterpillar products for your business needs. This quotation is valid for 30 days, after which time we reserve the right to re-quote. If there are any questions, please do not hesitate to contact me.

Sincerely,

Clint Aubley
Machine Sales Representative
Ohio CAT
caubley@ohiocat.com
216-469-4859



Cat[®] 926M

WHEEL LOADER

M SERIES – MAKING YOUR CHOICE EASY:

■ **Enjoy All Day Comfort** – Have a seat in the new M Series Small Wheel Loader and enjoy automatic temperature control, class leading sound levels, excellent all around visibility and low-effort joystick controls that move with you on a fully adjustable seat suspension. A large spacious operator environment combined with Caterpillar's exclusive hydraulic cylinder damping and smooth predictable controls make this the most comfortable seat on your job site.

■ **Work Made Easy** – Move more with Caterpillar's patented quick loading Performance Series buckets and optimized Z-bar linkage that combines the digging efficiency of a traditional Z-bar with tool carrier capabilities. The parallel lift and high tilt forces throughout the working range allow you to safely and confidently handle loads with precise control.

Multi-function work has never been easier with dedicated pumps for each system and a flow sharing implement valve governed by an intelligent power management system. Simultaneously lift, steer and drive without compromise. The M Series Small Wheel Loader simply does what you ask it to do.

■ **Efficiently Powerful** – Experience hybrid like fuel efficiency with an intelligent hydrostatic power train and industry leading fuel savings through a lower maximum engine speed of just 1,600 rpm in Standard Mode. Power when you need it with Caterpillar's exclusive Power-by-Range technology that increases power in Range 4 for improved speed on grade. For your toughest and most demanding applications a new Performance Mode will allow you to boost the power and hydraulic speed in all ranges to get the job done even quicker. Meets U.S. EPA Tier 4 Final/EU Stage IV emission standards with a Cat[®] C7.1 ACERT[™] engine that is designed to manage itself so you can concentrate on your work.

■ **Customize Your Experience** – Meet your application requirements and individual preferences with Caterpillar's industry first Hystat[™] Operator Modes featuring four unique power train settings. Select classic Torque Converter for smooth rollout, conventional Hystat for aggressive engine braking, an Ice Mode that maximizes your control on slippery underfoot, or default mode which blends the best of Hystat and Torque Converter characteristics. Fine tune machine performance with adjustments at your fingertips through the soft touch buttons and optional secondary display. Quickly set hydraulic response along with linkage kick-out positions, maximum wheel torque, and peak ground speed to efficiently perform a multitude of tasks.

Specifications

Engine

Engine Model	Cat C7.1 ACERT			
Power Mode	Standard Mode		Performance Mode	
Speed Range	Range 1-3*		Range 1-4	
Maximum Gross Power				
Maximum Engine Speed	1,600 rpm		1,800 rpm	
ISO 14396	109 kW	146 hp	114 kW	153 hp
ISO 14396 (DIN)	109 kW	148 hp	114 kW	155 hp
Rated Net Power	1,600 rpm		1,800 rpm	
SAE J1349	105 kW	141 hp	110 kW	148 hp
SAE J1349 at Maximum Fan Speed	95 kW	127 hp	100 kW	134 hp
ISO 9249 (DIN)	106 kW	144 hp	111 kW	151 hp

Engine (continued)

	Standard Mode		Performance Mode	
Maximum Gross Torque				
ISO 14396	721 N-m	531 lbf-ft	721 N-m	531 lbf-ft
Maximum Net Torque				
SAE J1349	694 N-m	511 lbf-ft	694 N-m	511 lbf-ft
ISO 9249 (1977)/EEC 80/1269	702 N-m	517 lbf-ft	702 N-m	517 lbf-ft
Displacement	7.01 L	427 in ³	7.01 L	427 in ³

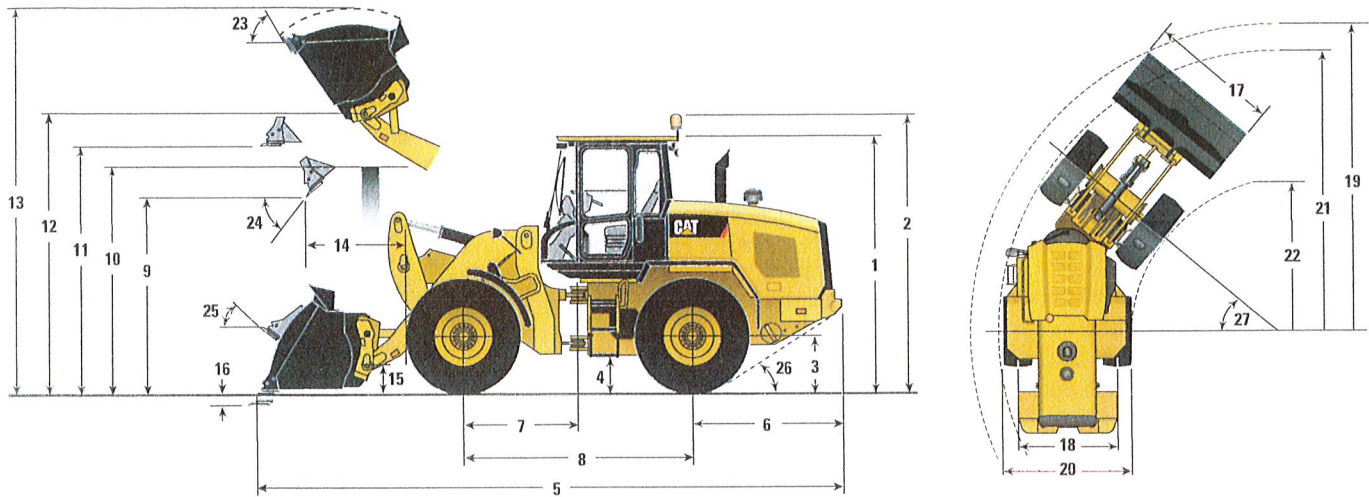
- Engine meets Tier 4 Final/Stage IV emission standards.
- Net power shown is the power available at the flywheel when the engine is equipped with alternator, air cleaner and diesel exhaust filter.

*Range 4 power is boosted to be the same as Performance Mode.



926M Wheel Loader

Dimensions and Operating Specifications (All dimensions are approximate. Dimensions vary with bucket and tire choice.)



	Standard Lift		High Lift	
** 1 Height: Ground to Cab	3340 mm	(10'11")	3340 mm	(10'11")
** 2 Height: Ground to Beacon	3669 mm	(12'0")	3669 mm	(12'0")
** 3 Height: Ground Axle Center	685 mm	(2'2")	685 mm	(2'2")
** 4 Height: Ground Clearance	397 mm	(1'3")	397 mm	(1'3")
* 5 Length: Overall	7451 mm	(24'5")	8093 mm	(26'6")
6 Length: Rear Axle to Bumper	1986 mm	(6'6")	1986 mm	(6'6")
7 Length: Hitch to Front Axle	1500 mm	(4'11")	1500 mm	(4'11")
8 Length: Wheel Base	3000 mm	(9'10")	3000 mm	(9'10")
* 9 Clearance: Bucket at 45 degrees	2885 mm	(9'5")	3378 mm	(11'0")
** 10 Clearance: Loadover Height	3330 mm	(10'11")	3550 mm	(11'7")
** 11 Clearance: Level Bucket	3580 mm	(11'8")	4073 mm	(13'4")
** 12 Height: Bucket Pin	3907 mm	(12'9")	4400 mm	(14'5")
** 13 Height: Overall	5076 mm	(16'7")	5569 mm	(18'3")
* 14 Reach: Bucket at 45 degrees	1024 mm	(3'4")	1261 mm	(4'1")
15 Carry Height: Bucket Pin	458 mm	(1'6")	649 mm	(2'1")
** 16 Dig Depth	100 mm	(3.9")	135 mm	(5.3")
17 Width: Bucket	2550 mm	(8'4")	2550 mm	(8'4")
18 Width: Tread Center	1930 mm	(6'3")	1930 mm	(6'3")
19 Turning Radius: Over Bucket	5924 mm	(19'5")	6234 mm	(20'5")
20 Width: Over Tires	2540 mm	(8'4")	2540 mm	(8'4")
21 Turning Radius: Outside of Tires	5402 mm	(17'8")	5402 mm	(17'8")
22 Turning Radius: Inside of Tires	2851 mm	(9'4")	2851 mm	(9'4")
23 Rack Angle at Full Lift	54 degrees		51 degrees	
24 Dump Angle at Full Lift	50 degrees		49 degrees	
25 Rack Angle at Carry	45 degrees		49 degrees	
26 Departure Angle	33 degrees		33 degrees	
27 Articulation Angle	40 degrees		40 degrees	
* Tipping Load – Straight (ISO 14397-1)	8792 kg	19,383 lb	6639 kg	14,637 lb
* Tipping Load – Full Turn (ISO 14397-1)	7530 kg	16,600 lb	5633 kg	12,419 lb
* Breakout	10 233 kg	22,538 lb	9714 kg	21,416 lb
* Operating Weight	13 037 kg	28,742 lb	13 316 kg	29,357 lb

*Vary with bucket.

**Vary with tire.

Dimensions listed are for a machine configured with 1.9 m³ (2.5 yd³) general purpose Fusion™ bucket, bolt-on cutting edge, heavy counterweights, additional guarding, 80 kg (176 lb) operator and Michelin 20.5 R25 (L-3) XHA2 tires.