

RESOLUTION NO.: 2020-R16
SPONSOR: MAYOR NEUGEBAUER
INTRODUCED: FEB 11, 2020 **ASSIGNED TO:** _____ **TCS**

A RESOLUTION AUTHORIZING THE PURCHASE OF ONE (1) 2019 CATERPILLAR 926M WHEEL LOADER FROM OHIO CAT FOR USE BY THE CITY'S SERVICE DEPARTMENT, AND DECLARING AN EMERGENCY.

WHEREAS, it has been determined that the City is in need of a wheel loader to perform various tasks within the Service Divisions; and

WHEREAS, the City authorizes the purchase of one (1) 2020 Caterpillar 926M Wheel Loader from Ohio CAT as a direct purchase and waiving competitive bidding.

NOW, THEREFORE, BE IT RESOLVED BY THE COUNCIL OF THE CITY OF GREEN, COUNTY OF SUMMIT, AND STATE OF OHIO THAT:

SECTION ONE:

The Mayor is hereby authorized and directed to enter into a purchase agreement with Ohio CAT as the authorized dealer for Northeast Ohio, in an amount not to exceed One Hundred Eighty-Five Thousand Six Hundred Ninety-One Dollars and Seventy Cents (\$185,691.70), as is more fully set forth in the quotation attached hereto and incorporated herein as Exhibit "A".

SECTION TWO:

The requirement for competitive bidding is waived pursuant to Section 210.05 of the Codified Ordinances of the City of Green. This purchase is being made in accordance with the Source Well pricing cooperative agreement #032119-CAT, a State of Ohio authorized Purchase Program, in which the City of Green is in good standing.

SECTION THREE:

Green City Council authorizes the Finance Director to make payments to Ohio CAT through the established purchase order procedure.

SECTION FOUR:

The City of Green finds and determines that all formal actions of this Council concerning and relating to the adoption of this Resolution were taken in open meetings of this Council and any deliberations of this Council and any of its committees that resulted in those formal actions were in meetings open to the public, in compliance with all legal requirements.

SECTION FIVE:

Green City Council declares this to be an emergency immediately necessary for the preservation of the public peace, health, safety and welfare of the citizens of Green and for the further reason that the need for this equipment is immediate. Provided that this legislation receives the affirmative vote of three-fourths ($\frac{3}{4}$ ths) of the members elected or appointed to Council, it shall take effect and be in force immediately upon its passage and approval by the Mayor; otherwise, it shall take effect and be in force at the earliest time allowed by law.

Page 2
Resolution 2020-R16

ADOPTED: FEBRUARY 25, 2020

Molly Kapeluck
Molly Kapeluck, Clerk

Barb Babbitt
Barb Babbitt, Council President

APPROVED: Feb. 26, 2020

Gerard M. Neugebauer
Gerard M. Neugebauer, Mayor

COPIED
~~MAY~~ FIN LAW PLAN ENG
SVCE FIRE PARK ZONE HR

ENACTED EFFECTIVE: February 26, 2020

ON ROLL CALL: Babbitt *-aye* Brandenburg *-aye* DeVitis *-aye* France *-aye*
Shaughnessy *-aye* Yeargin *-aye* Young *-aye* adopted 20

Suburbanite publication on March 6 and March 13, 2020

Molly Kapeluck
Molly Kapeluck, Clerk

Lisa Carey Dean

02/06/2020 Approved as to form and content by Lisa Carey Dean, Director of Law

Exhibit "A"

2020-R16



Quote 204532-01

January 29, 2020

CITY OF GREEN/FINANCE

5383 MASSILLON ROAD
GREEN, Ohio 44232-0278
Sourcewell member #43084
Ohio Cat contract 032119-CAT



Dear Dave,

Thank you for your interest in Ohio CAT and Caterpillar products for your business needs. This quotation is valid for 30 days, after which time we reserve the right to re-quote. If there are any questions, please do not hesitate to contact me.

One (1) New Caterpillar Model: 926M Wheel Loader with all standard equipment in addition to the additional specifications listed below:

STOCK NUMBER: H16999

SERIAL NUMBER: 0LTE07523

YEAR: 2020

SMU: 3

One (1) New Caterpillar Model: 926M Wheel Loader with all standard equipment in addition to the additional specifications listed below:

Exhibit "A"



MACHINE SPECIFICATIONS

926M WHEEL LOADER	536-5300
KIT,SERIALIZED TECHNICAL MEDIA	0P-2491
DIFFERENTIAL, OPEN REAR	333-6528
RADIO, READY	342-0130
COUNTERWEIGHT, HEAVY	348-2579
RIDE CONTROL	430-2859
PREP PACK, UNITED STATES	430-2943
STEERING, STANDARD	430-2996
ENGINE AR	430-3038
WARNING, BEACON, LED STROBE	333-1425
PACK, DOMESTIC TRUCK	0P-0210
HYDRAULICS, STANDARD	536-5282
LIGHTS, ROADING, HALOGEN, RH	541-3066
HYDRAULICS, 3V, CPLR READY, SL	536-5323
CAB, DELUXE	536-5309
LIGHTS, STD HALOGEN	488-1112
QUICK COUPLER, FUSION	536-5313
JUMPER LINES, NONE	536-5339
LINES, AUX 3RD, STD LIFT	530-1623
CONTROL GP,PAYLOAD,DEMO 250 HR	566-4597
CAMERA, REAR VIEW	377-5635
ENVIRONMENT, MEDIUM DEBRIS	536-5340
WEATHER, COLD START 120V	454-0610
SEAT, STANDARD	563-5966
FENDERS, DEFLECTORS	419-8850
TOOLBOX AUX	491-7922
LANE 3 ORDER	0P-9003
TIRES, 20.5R25 TI MXL * L3	376-0827
PRODUCT LINK, CELLULAR PLE641	565-0909
LOADER,ATTACHMENT - H22615A	360-3322
CUTTING EDGE, BOLT ON4 PIECE - H22615A	8E-4566
3RD JUMPER LINES INSTALLED	
CAT SWL MATERIAL HANDLING ARM	
ADDITIONAL ITEMS REQUESTED:	

1-CAT GRAPPLE BUCKET AGED INVENTORY IN STOCK \$14,500
1-WERK-BRAU 60" HYRAULIC FORKS WITH 60" CARRIAGE \$9,250
1-AUTO-LUBE INSTALLED \$9,500

LIST PRICE	\$220,930.00
EXT WARRANTY	Included
LESS SOURCEWELL DISCOUNT OF 24% AND OHIO CAT SPECIAL DISCOUNT OF 6%	\$68,488.30
BALANCE, INCLUDING THE ADDITIONAL ITEMS REQUESTED.	\$185,691.70



WARRANTY

Standard Warranty: 12 Month/unlimited hours Full Machine* All standard warranties include travel time & mileage for first twelve months. Scheduled Oil sampling is required during entire warranty period.

Extended Coverage: 926-60 MO/2500 HR PREMIER (Tier 4)

Thank you for your interest in Ohio CAT and Caterpillar products for your business needs. This quotation is valid for 30 days, after which time we reserve the right to re-quote. If there are any questions, please do not hesitate to contact me.

Sincerely,

Clint Aubley
Machine Sales Representative
Ohio CAT
caubley@ohiocat.com
216-469-4859





Cat[®] 926M

WHEEL LOADER

M SERIES — MAKING YOUR CHOICE EASY:

■ **Enjoy All Day Comfort** – Have a seat in the new M Series Small Wheel Loader and enjoy automatic temperature control, class leading sound levels, excellent all around visibility and low-effort joystick controls that move with you on a fully adjustable seat suspension. A large spacious operator environment combined with Caterpillar's exclusive hydraulic cylinder damping and smooth predictable controls make this the most comfortable seat on your job site.

■ **Work Made Easy** – Move more with Caterpillar's patented quick loading Performance Series buckets and optimized Z-bar linkage that combines the digging efficiency of a traditional Z-bar with tool carrier capabilities. The parallel lift and high tilt forces throughout the working range allow you to safely and confidently handle loads with precise control.

Multi-function work has never been easier with dedicated pumps for each system and a flow sharing implement valve governed by an intelligent power management system. Simultaneously lift, steer and drive without compromise. The M Series Small Wheel Loader simply does what you ask it to do.

■ **Efficiently Powerful** – Experience hybrid like fuel efficiency with an intelligent hydrostatic power train and industry leading fuel savings through a lower maximum engine speed of just 1,600 rpm in Standard Mode. Power when you need it with Caterpillar's exclusive Power-by-Range technology that increases power in Range 4 for improved speed on grade. For your toughest and most demanding applications a new Performance Mode will allow you to boost the power and hydraulic speed in all ranges to get the job done even quicker. Meets U.S. EPA Tier 4 Final/EU Stage IV emission standards with a Cat[®] C7.1 ACERT[™] engine that is designed to manage itself so you can concentrate on your work.

■ **Customize Your Experience** – Meet your application requirements and individual preferences with Caterpillar's industry first Hystat[™] Operator Modes featuring four unique power train settings. Select classic Torque Converter for smooth rollout, conventional Hystat for aggressive engine braking, an Ice Mode that maximizes your control on slippery underfoot, or default mode which blends the best of Hystat and Torque Converter characteristics. Fine tune machine performance with adjustments at your fingertips through the soft touch buttons and optional secondary display. Quickly set hydraulic response along with linkage kick-out positions, maximum wheel torque, and peak ground speed to efficiently perform a multitude of tasks.

Specifications

Engine

Engine Model	Cat C7.1 ACERT			
Power Mode	Standard Mode		Performance Mode	
Speed Range	Range 1-3*		Range 1-4	
Maximum Gross Power				
Maximum Engine Speed	1,600 rpm		1,800 rpm	
ISO 14396	109 kW	146 hp	114 kW	153 hp
ISO 14396 (DIN)	109 kW	148 hp	114 kW	155 hp
Rated Net Power	1,600 rpm		1,800 rpm	
SAE J1349	105 kW	141 hp	110 kW	148 hp
SAE J1349 at				
Maximum Fan Speed	95 kW	127 hp	100 kW	134 hp
ISO 9249 (DIN)	106 kW	144 hp	111 kW	151 hp

Engine (continued)

	Standard Mode		Performance Mode	
Maximum Gross Torque				
ISO 14396	721 N-m	531 lbf-ft	721 N-m	531 lbf-ft
Maximum Net Torque				
SAE J1349	694 N-m	511 lbf-ft	694 N-m	511 lbf-ft
ISO 9249 (1977)/EEC 80/1269	702 N-m	517 lbf-ft	702 N-m	517 lbf-ft
Displacement	7.01 L	427 in ³	7.01 L	427 in ³

- Engine meets Tier 4 Final/Stage IV emission standards.
- Net power shown is the power available at the flywheel when the engine is equipped with alternator, air cleaner and diesel exhaust filter.

*Range 4 power is boosted to be the same as Performance Mode.



926M Wheel Loader

Buckets

Bucket Capacities – General Purpose	1.9-2.5 m ³	2.5-3.2 yd ³
Bucket Capacities – Light Material	3.1-5.0 m ³	4.0-6.5 yd ³

Steering

Steering Articulation Angle (each direction)	40°	
Maximum Flow – Steering Pump	130 L/min	34 gal/min
Maximum Working Pressure – Steering Pump	24 130 kPa	3,500 psi
Maximum Steering Torque:		
0 degrees (straight machine)	50 375 N-m	37,155 lbf-ft
40 degrees (full turn)	37 620 N-m	27,747 lbf-ft
Steering Cycle Times (full left to full right):		
At 1,800 rpm: 90 rpm steering wheel speed	2.4 seconds	
Number of Steering Wheel Turns – full left to full right or full right to full left	3.5 turns	

Loader Hydraulic System

Maximum Flow – Implement Pump	150 L/min	40 gal/min
3rd Function Maximum Flow*	150 L/min	40 gal/min
4th Function Maximum Flow*	150 L/min	40 gal/min
Maximum Working Pressure – Implement Pump	26 000 kPa	3,771 psi
Relief Pressure – Tilt Cylinder	28 000 kPa	4,061 psi
3rd Function Maximum Working Pressure	26 000 kPa	3,771 psi
4th Function Maximum Working Pressure	26 000 kPa	3,771 psi
Hydraulic Cycle Times:	Standard Mode	Performance Mode
	at 1,600 rpm	at 1,800 rpm
Raise (ground level to maximum lift)	6.2 seconds	5.5 seconds
Dump (at maximum lift height)	1.7 seconds	1.5 seconds
Float Down (maximum lift to ground level)	2.6 seconds	2.6 seconds
Total Cycle Time	10.5 seconds	9.5 seconds

*Adjustable from 20% to 100% of maximum flow through the secondary display, when equipped.

Service Refill Capacities

Fuel Tank	195 L	51.5 gal
Cooling System	30 L	7.9 gal
Engine Crankcase	20 L	5.3 gal
Transmission (gearbox)	8.5 L	2.2 gal
Axles:		
Front	21 L	5.5 gal
Rear	21 L	5.5 gal
Hydraulic System (including tank)	160 L	42.3 gal
Hydraulic Tank	90 L	23.8 gal
Diesel Exhaust Fluid (DEF) Tank	19 L	5 gal

• DEF used in Cat SCR systems must meet the requirements outlined in the International Organization for Standardization (ISO) standard 22241-1.

Transmission

Forward and Reverse:		
Range 1*	1-13 km/h	0.6-8 mph
Range 2	13 km/h	8 mph
Range 3	27 km/h	17 mph
Range 4	40 km/h	25 mph

*Creeper control allows maximum speed range adjustability from 1 km/h (0.6 mph) to 13 km/h (8 mph) in Range 1 through the secondary display, when equipped. Factory default is 7 km/h (4.4 mph).

Tires

Standard Size	20.5 R25, radial (L-3)	
Other Choices Include:	20.5 R25, radial (L-2)	17.5 R25, radial (L-2)
	20.5 R25, radial (L-5)	17.5 R25, radial (L-3)
	20.5-25 12PR (L-2)	17.5 R25, radial (L-5)
	20.5-25 12PR (L-3)	550/65 R25 radial (L-3)
	20.5-25 16PR (L-5)	Skidder/Agriculture Flexports Gen II

- Other tire choices are available. Contact your Cat dealer for details.
- In certain applications, the loader's productive capabilities may exceed the tire's tonnes-km/h (ton-mph) capabilities.
- Caterpillar recommends that you consult a tire supplier to evaluate all conditions before selecting a tire model.

Cab

ROPS	SAE J1040 MAY94, ISO 3471-1994
FOPS	SAE J/ISO 3449 APR98, Level II, ISO 3449 1992 Level II

- Cab and Rollover Protective Structures (ROPS) are standard in North America and Europe.
- The declared dynamic operator sound pressure levels per ISO 6396:2008*, when properly installed and maintained, are:
 - Standard cab: 68 ±3 dB(A)
 - Deluxe cab: 66 ±2 dB(A)

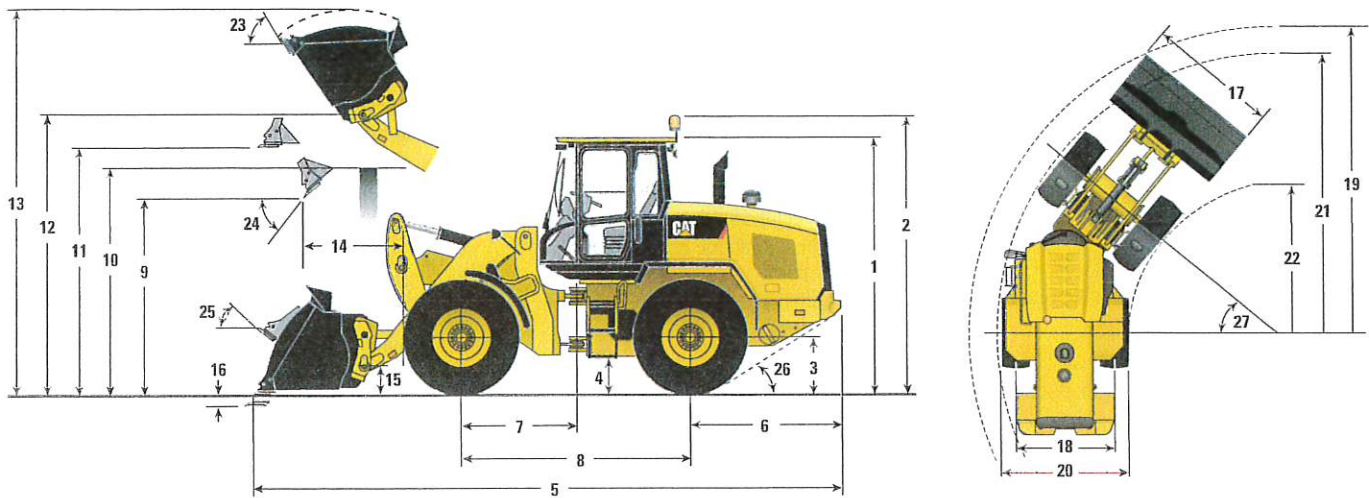
*The measurements were conducted with the cab doors and windows closed and at 70% of the maximum engine cooling fan speed. The sound level may vary at different engine cooling fan speeds.

Axles

Front	Fixed
	Locking differential (standard)
Rear	Oscillating ±11 degrees
	Open differential (standard)
	Limited slip differential (optional)

926M Wheel Loader

Dimensions and Operating Specifications (All dimensions are approximate. Dimensions vary with bucket and tire choice.)



	Standard Lift		High Lift	
** 1 Height: Ground to Cab	3340 mm	(10'11")	3340 mm	(10'11")
** 2 Height: Ground to Beacon	3669 mm	(12'0")	3669 mm	(12'0")
** 3 Height: Ground Axle Center	685 mm	(2'2")	685 mm	(2'2")
** 4 Height: Ground Clearance	397 mm	(1'3")	397 mm	(1'3")
* 5 Length: Overall	7451 mm	(24'5")	8093 mm	(26'6")
6 Length: Rear Axle to Bumper	1986 mm	(6'6")	1986 mm	(6'6")
7 Length: Hitch to Front Axle	1500 mm	(4'11")	1500 mm	(4'11")
8 Length: Wheel Base	3000 mm	(9'10")	3000 mm	(9'10")
* 9 Clearance: Bucket at 45 degrees	2885 mm	(9'5")	3378 mm	(11'0")
** 10 Clearance: Loadover Height	3330 mm	(10'11")	3550 mm	(11'7")
** 11 Clearance: Level Bucket	3580 mm	(11'8")	4073 mm	(13'4")
** 12 Height: Bucket Pin	3907 mm	(12'9")	4400 mm	(14'5")
** 13 Height: Overall	5076 mm	(16'7")	5569 mm	(18'3")
* 14 Reach: Bucket at 45 degrees	1024 mm	(3'4")	1261 mm	(4'1")
15 Carry Height: Bucket Pin	458 mm	(1'6")	649 mm	(2'1")
** 16 Dig Depth	100 mm	(3.9")	135 mm	(5.3")
17 Width: Bucket	2550 mm	(8'4")	2550 mm	(8'4")
18 Width: Tread Center	1930 mm	(6'3")	1930 mm	(6'3")
19 Turning Radius: Over Bucket	5924 mm	(19'5")	6234 mm	(20'5")
20 Width: Over Tires	2540 mm	(8'4")	2540 mm	(8'4")
21 Turning Radius: Outside of Tires	5402 mm	(17'8")	5402 mm	(17'8")
22 Turning Radius: Inside of Tires	2851 mm	(9'4")	2851 mm	(9'4")
23 Rack Angle at Full Lift	54 degrees		51 degrees	
24 Dump Angle at Full Lift	50 degrees		49 degrees	
25 Rack Angle at Carry	45 degrees		49 degrees	
26 Departure Angle	33 degrees		33 degrees	
27 Articulation Angle	40 degrees		40 degrees	
* Tipping Load – Straight (ISO 14397-1)	8792 kg	19,383 lb	6639 kg	14,637 lb
* Tipping Load – Full Turn (ISO 14397-1)	7530 kg	16,600 lb	5633 kg	12,419 lb
* Breakout	10 233 kg	22,538 lb	9714 kg	21,416 lb
* Operating Weight	13 037 kg	28,742 lb	13 316 kg	29,357 lb

*Vary with bucket.

**Vary with tire.

Dimensions listed are for a machine configured with 1.9 m³ (2.5 yd³) general purpose Fusion™ bucket, bolt-on cutting edge, heavy counterweights, additional guarding, 80 kg (176 lb) operator and Michelin 20.5 R25 (L-3) XHA2 tires.

926M Wheel Loader

STANDARD EQUIPMENT

POWER TRAIN

- Auto idle shut down feature
- Cat C7.1 ACERT engine
 - Power modes (Standard and Performance)
 - Power by range (High Power in Range 4)
 - Turbocharged and aftercooled
 - Filtered crankcase breather
 - Diesel particulate filter
 - Selective Catalyst Reduction
- Coded start (requires secondary display)
- Coolant protection to -34° C (-29° F)
- Enclosed wet disc full hydraulic brakes
- Fuel priming pump, automatic
- Hydraulically driven demand cooling fan
- Hydrostatic transmission with electronic control
 - Operator modes (Default, TC, Hystat, and Ice)
 - Directional Shift Aggressiveness (fast, medium, slow)
 - Rimpull control, adjust wheel torque
 - Creeper control, adjust ground speed
- Parking brake, electric
- Single plane cooling package wide six fins per inch density
- Throttle lock and max speed limiter

HYDRAULICS

- Automatic lift and bucket kickouts, adjustable in-cab
- Bucket and fork modes, adjustable in-cab
- Cylinder damping at kickout and mechanical end stops
- Fine mode control (fast, medium, slow) in fork mode
- Hydraulic response setting (fast, medium, slow)
- Hydraulic diagnostic connectors and S.O.SSM ports
- Load sensing hydraulics and steering

ELECTRICAL

- Alternator, 115 amp, heavy duty
- 12V power supply in cab (2)
- Batteries, 1,000 CCA (2) 24V system, disconnect switch
- Back-up alarm
- Emergency shutdown switch
- Halogen work and roading lights, LED rear tail lights
- Product Link™ PRO with three year subscription
- Remote jump start post
- Resettable main and critical function breakers

OPERATOR ENVIRONMENT

- 75 mm (3 in) retractable seat belt, with audible alarm and indicator
- Automatic temperature control
- External heated mirrors with lower parabolic
- Hydraulic control lockout
- Interior cab lighting, door and dome
- Interior rearview mirrors (2)
- Lunch box storage
- Radio ready speakers
- Rear window defrost, electric
- Seat-mounted electronic implement controls, adjustable
- Column mounted multi function control – lights, wipers, turn signal
- Tilt and telescopic steering wheel
- Tinted front glass
- Wet arm wiper/washer, 2-speed and intermittent, front

OTHER STANDARD EQUIPMENT

- Large-access enclosure doors with adjustable close/open force
- Parallel lift loader linkage

EU STANDARD EQUIPMENT

- Deluxe cab
- Secondary display
- Rearview camera

OPTIONAL EQUIPMENT

- Auto lube, integrated in secondary display
- Auxiliary flow, third and fourth function, adjustable through secondary display
- Beacon light, strobe
- Cab, deluxe (standard in Europe, optional in North America)
 - Electrically adjustable external heated mirrors (2)
 - Secondary display to enable features and adjust parameters
 - Sunscreen, front and rear
- Camera, rearview (standard in Europe)
- Cold start package
- Counterweight, (heavy and logger)
- Coupler, (Fusion and ISO 23727)
- Debris packages (low, medium, high)
- Fenders (extended cover and full coverage)
- Guarding (machine and operator)
- Linkage, high lift
- Lights, auxiliary, halogen or LED with engine compartment lights
- Object Detection
- Product Link ELITE with capabilities for software push, data logging, histogram and trend mapping
- Radio packages
- Ride Control System, adjustable through secondary display
- Seats
 - Deluxe seat – fully adjustable fabric air suspension seat with mid backrest and mechanical lumbar support
 - Premium seat – fully adjustable leather and fabric air suspension with high backrest and air lumbar support. Seat is heated and ventilated on bottom cushion and backrest.
- Steering
 - Dual mode and secondary
- NOTE: Not all features are available in all regions.

For more complete information on Cat products, dealer services, and industry solutions, visit us on the web at www.cat.com

AEHQ7361 (11-14)

© 2014 Caterpillar
All Rights Reserved
Printed in U.S.A.

Materials and specifications are subject to change without notice. Featured machines in photos may include additional equipment. See your Cat dealer for available options.

CAT, CATERPILLAR, SAFETY.CAT.COM, their respective logos, "Caterpillar Yellow" and the "Power Edge" trade dress, as well as corporate and product identity used herein, are trademarks of Caterpillar and may not be used without permission.

