

2019-R28
EXHIBIT "A"



Ganley Ford, Inc.
2835 Barber Road, Barberton, Ohio, 442031003
Office: 330-745-9081
Fax: 330-745-4054

Customer Proposal

Prepared for:

Louie Yankovich
City of Green
5383 Massillon Rd
Green, OH 44232
Office: 330-896-5503
Email: lyankovich@cityofgreen.org

Prepared by:

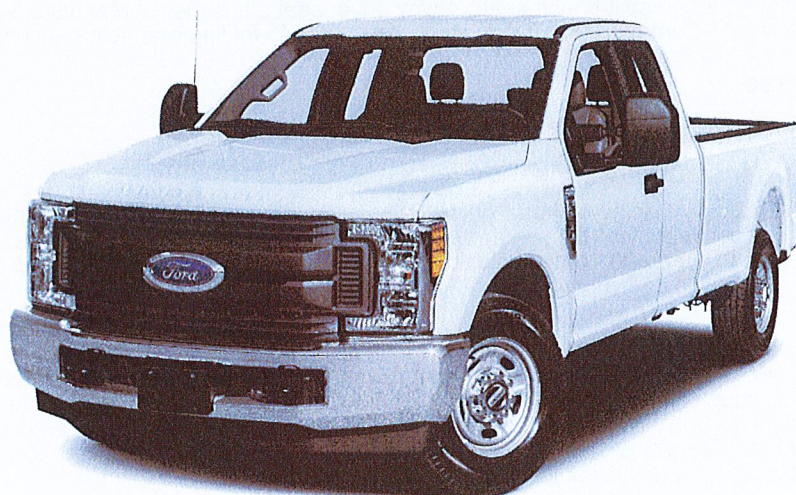
Tom Stancil
Office: 330-701-1449
Email: tstancil@ganleyauto.com

Date: 03/15/2019

Vehicle: 2019 F-250 XL

4x4 SD Super Cab 6.75' box 148" WB SRW

Quote ID: 60014





Ganley Ford, Inc.
2835 Barber Road, Barberton, Ohio, 442031003
Office: 330-745-9081
Fax: 330-745-4054

2019 F-250, SD Super Cab
4x4 SD Super Cab 6.75' box 148" WB SRW
XL(X2B)
Price Level: 950 Quote ID: 60014

Selected Equipment & Specs

Dimensions

Exterior length: 238.2" * Cab to axle: 39.9" * Exterior width: 80.0" * Exterior height: 81.5" * Wheelbase: 148.0" * Front track: 68.3" * Rear track: 67.2" * Turning radius: 24.8' * Min ground clearance: 8.2" * Front legroom: 43.9" * Rear legroom: 33.5" * Front headroom: 40.8" * Rear headroom: 40.3" * Front hiproom: 62.5" * Rear hiproom: 64.7" * Front shoulder room: 66.7" * Rear shoulder room: 65.8" * Passenger volume: 116.0cu.ft. * Approach angle: 17.9 deg * Departure angle: 22.3 deg * Cargo volume: 31.6cu.ft. * Maximum cargo volume: 31.6cu.ft. * Box length: 81.9"

Powertrain

385hp 6.2L SOHC 16 valve V-8 engine with variable valve control, SMPI * Recommended fuel : regular unleaded * federal * TorqShift-G 6 speed automatic transmission with overdrive * Part-time * Fuel Economy Cty: N/A * Fuel Economy Highway: N/A

Suspension/Handling

Front Mono-beam non-independent suspension with anti-roll bar, HD shocks * Rear rigid axle leaf spring suspension with HD shocks * Firm ride Suspension * Hydraulic power-assist re-circulating ball Steering * Front and rear 17 x 7.5 argent steel wheels * LT245/75SR17 EBSW AS front and rear tires

Body Exterior

4 doors * Reverse opening left rear passenger * Reverse opening right rear passenger * Driver and passenger power remote heated, manual folding door mirrors with turn signal indicator * Turn signal indicator in mirrors * Black door mirrors * Black bumpers * Running boards * Class V trailer hitch with with brake controller and trailer sway control * Bed-rail protectors * Trailer harness * Box style: regular * Clearcoat paint * Front and rear 17 x 7.5 wheels * 2 front tow hook(s)

Convenience

Manual air conditioning with air filter * Power windows * Driver and passenger 1-touch up * Driver and passenger 1-touch down * Remote power door locks with 2 stage unlock and illuminated entry * Manual tilt steering wheel * Manual telescopic steering wheel * Day-night rearview mirror * 1 1st row LCD monitor * Front cupholders * Passenger visor mirror * Full overhead console * Driver and passenger door bins * Rear door bins * Upfitter switches

Seats and Trim

Seating capacity of 6 * Front 40-20-40 split-bench seat * 4-way driver seat adjustment * Manual driver lumbar support * 4-way passenger seat adjustment * Centre front armrest with storage * 60-40 folding rear split-bench seat

Entertainment Features

AM/FM stereo radio * 4 speakers * Fixed antenna

Lighting, Visibility and Instrumentation

Halogen aero-composite headlights * Delay-off headlights * Fully automatic headlights * Variable intermittent front windshield wipers * Rear window defroster * Deep tinted windows * Front reading lights * Tachometer * Oil pressure gauge * Outside temperature display * Camera(s) - rear * Low tire pressure warning * Trip computer * Trip odometer

Safety and Security

4-wheel ABS brakes * Brake assist with hill hold control * 4-wheel disc brakes * Electronic stability control * ABS and driveline traction control * Dual front impact airbag supplemental restraint system with passenger cancel * Dual seat mounted side impact airbag supplemental restraint system * Safety Canopy System curtain 1st and 2nd row overhead airbag supplemental restraint system * Remote activated perimeter/approach lighting * Power remote door locks with 2 stage unlock and panic alarm * Security system with SecuriLock immobilizer * MyKey restricted driving mode * Manually adjustable front head restraints * 3 manually adjustable rear head restraints

Dimensions

General Weights

Curb	6,444 lbs.	GVWR	10,000 lbs.
Payload	3,570 lbs.		

Prices and content availability as shown are subject to change and should be treated as estimates only. Actual base vehicle, package and option pricing may vary from this estimate because of special local pricing, availability or pricing adjustments not reflected in the dealer's computer system. See salesperson for the most current information.

Prepared for: Louie Yankovich, City of Green
By: Tom Stancil Date: 03/15/2019



Ganley Ford, Inc.
2835 Barber Road, Barberton, Ohio, 442031003
Office: 330-745-9081
Fax: 330-745-4054

2019 F-250, SD Super Cab
4x4 SD Super Cab 6.75' box 148" WB SRW
XL(X2B)
Price Level: 950 Quote ID: 60014

Selected Equipment & Specs (cont'd)

Front Weights

Front GAWR	5,600 lbs.	Front curb weight	3,764 lbs.
Front axle capacity	6,000 lbs.	Front spring rating	5,600 lbs.
Front tire/wheel capacity	6,390 lbs.		

Rear Weights

Rear GAWR	6,340 lbs.	Rear curb weight	2,680 lbs.
Rear axle capacity	6,200 lbs.	Rear spring rating	6,340 lbs.
Rear tire/wheel capacity	6,390 lbs.		

Trailer Type

Type	Regular	Harness	Yes
Class	V	Hitch	Yes
Brake controller	Yes	Trailer sway control	Yes

General Trailering

5th-wheel towing capacity	12600 lbs.	Gooseneck towing capacity	12600 lbs.
Towing capacity	12600 lbs.	GCWR	19500 lbs.

Fuel Tank type

Capacity	34 gal.
----------	---------

Off Road

Approach angle	18 deg	Departure angle	22 deg
Ramp breakover angle	24 deg	Min ground clearance	8"
Load floor height	38"		

Exterior cargo

Length	81.9"	Minimum width	50.5"
Volume	65.4 cu.ft.	Pickup box depth	21.1"
Maximum width	66.9"	Tailgate width	60.5"

Interior cargo

Cargo volume	31.6 cu.ft.	Maximum cargo volume	31.6 cu.ft.
--------------	-------------	----------------------	-------------

Powertrain

Engine Type

Block material	Iron	Cylinders	V-8
Head material	Aluminum	Ignition	Spark
Injection	Sequential MPI	Liters	6.2L
Orientation	Longitudinal	Recommended fuel	Regular unleaded
Valves per cylinder	2	Valvetrain	SOHC
Variable valve control	Yes		

Engine Spec

Bore	4.02"	Compression ratio	9.8:1
Displacement	379 cu.in.	Stroke	3.74"

Engine Power

SAE J1349 AUG2004 compliant	Yes	Output	385 HP @ 5,750 RPM
Torque	430 ft.-lb @ 3,800 RPM		

Alternator

Type	HD	Amps	200
------	----	------	-----

Prices and content availability as shown are subject to change and should be treated as estimates only. Actual base vehicle, package and option pricing may vary from this estimate because of special local pricing, availability or pricing adjustments not reflected in the dealer's computer system. See salesperson for the most current information.



Ganley Ford, Inc.
 2835 Barber Road, Barberton, Ohio, 442031003
 Office: 330-745-9081
 Fax: 330-745-4054

2019 F-250, SD Super Cab
 4x4 SD Super Cab 6.75' box 148" WB SRW
 XL(X2B)
 Price Level: 950 Quote ID: 60014

Selected Equipment & Specs (cont'd)

Brakes

ABS	4-wheel	ABS channels	4
Type	4-wheel disc	Vented discs	Front and rear

Brake Assistance

Brake assist	Yes	Hill hold control	Yes
--------------------	-----	-------------------------	-----

Suspension Control

Ride	Firm	Electronic stability control	Stability control with anti-roll
------------	------	------------------------------------	----------------------------------

Front Suspension

Independence	Mono-beam non-independent	Anti-roll bar	Regular
--------------------	---------------------------	---------------------	---------

Front Spring

Type	Coil	Grade	HD
------------	------	-------------	----

Front Shocks

Type	HD
------------	----

Rear Suspension

Independence	Rigid axle	Type	Leaf
--------------------	------------	------------	------

Rear Spring

Type	Leaf	Grade	HD
------------	------	-------------	----

Rear Shocks

Type	HD
------------	----

Steering

Activation	Hydraulic power-assist	Type	Re-circulating ball
------------------	------------------------	------------	---------------------

Steering Specs

# of wheels	2
-------------------	---

Exterior

Front Wheels

Diameter	17"	Width	7.50"
----------------	-----	-------------	-------

Rear Wheels

Diameter	17"	Width	7.50"
----------------	-----	-------------	-------

Spare Wheels

Wheel material	Steel
----------------------	-------

Front and Rear Wheels

Appearance	Argent	Material	Steel
Covers	Hub		

Front Tires

Aspect	75	Diameter	17"
Sidewalls	BSW	Speed	S
Tread	AS	Type	LT
Width	245mm	LT load rating	E
RPM	645		

Prices and content availability as shown are subject to change and should be treated as estimates only. Actual base vehicle, package and option pricing may vary from this estimate because of special local pricing, availability or pricing adjustments not reflected in the dealer's computer system. See salesperson for the most current information.

Prepared for: Louie Yankovich, City of Green
 By: Tom Stancil Date: 03/15/2019



Ganley Ford, Inc.
 2835 Barber Road, Barberton, Ohio, 442031003
 Office: 330-745-9081
 Fax: 330-745-4054

2019 F-250, SD Super Cab
 4x4 SD Super Cab 6.75' box 148" WB SRW
 XL(X2B)
 Price Level: 950 Quote ID: 60014

Selected Equipment & Specs (cont'd)

Driver Seat

Fore/aft	Manual	Reclining	Manual
Way direction control	4	Lumbar support	Manual

Passenger seat

Fore/aft	Manual	Reclining	Manual
Way direction control	4		

Front Head Restraint

Control	Manual	Type	Adjustable
---------------	--------	------------	------------

Front Armrest

Centre	Yes	Storage	Yes
--------------	-----	---------------	-----

Rear Seats

Descriptor	Split-bench	Facing	Front
Folding	60-40	Folding position	Fold-up cushion
Type	Fixed		

Rear Head Restraints

Control	Manual	Type	Adjustable
Number	3		

Front Seat Trim

Material	Vinyl	Back material	Vinyl
----------------	-------	---------------------	-------

Rear Seat Trim Group

Material	Vinyl	Back material	Carpet
----------------	-------	---------------------	--------

Convenience

AC And Heat Type

Air conditioning	Manual	Air filter	Yes
Underseat ducts	Yes		

Audio System

Radio	AM/FM stereo	Radio grade	Regular
Seek-scan	Yes		

Audio Speakers

Speaker type	Regular	Speakers	4
--------------------	---------	----------------	---

Audio Antenna

Type	Fixed
------------	-------

LCD Monitors

1st row	1	Primary monitor size (inches)	2.3
---------------	---	-------------------------------------	-----

Convenience Features

Retained accessory power	Yes	12V DC power outlet	2
Back-up alarm	Yes	Upfitter switches	Yes

Door Lock Activation

Type	Power with 2 stage unlock	Remote	Keyfob (front doors)
Integrated key/remote	Yes		

Door Lock Type

Prices and content availability as shown are subject to change and should be treated as estimates only. Actual base vehicle, package and option pricing may vary from this estimate because of special local pricing, availability or pricing adjustments not reflected in the dealer's computer system. See salesperson for the most current information.

Prepared for: Louie Yankovich, City of Green
 By: Tom Stancil Date: 03/15/2019



Ganley Ford, Inc.
 2835 Barber Road, Barberton, Ohio, 442031003
 Office: 330-745-9081
 Fax: 330-745-4054

2019 F-250, SD Super Cab
 4x4 SD Super Cab 6.75' box 148" WB SRW
 XL(X2B)
 Price Level: 950 Quote ID: 60014

Selected Equipment & Specs (cont'd)

Coverage	Full	Covering	Vinyl/rubber
<i>Trim Feature</i>			
Gear shift knob	Urethane	Interior accents	Chrome
<i>Lighting</i>			
Dome light type	Fade	Front reading	Yes
Illuminated entry	Yes	Variable IP lighting	Yes
<i>Overhead Console Storage</i>			
Storage	Yes	Type	Full
<i>Storage</i>			
Driver door bin	Yes	Front Beverage holder(s)	Yes
Glove box	Locking	Passenger door bin	Yes
Illuminated	Yes	Instrument panel	Bin
Dashboard	Covered	Rear door bins	Yes
<i>Legroom</i>			
Front	43.9"	Rear	33.5"
<i>Headroom</i>			
Front	40.8"	Rear	40.3"
<i>Hip Room</i>			
Front	62.5"	Rear	64.7"
<i>Shoulder Room</i>			
Front	66.7"	Rear	65.8"
<i>Interior Volume</i>			
Passenger volume	116.0 cu.ft.		

Prices and content availability as shown are subject to change and should be treated as estimates only. Actual base vehicle, package and option pricing may vary from this estimate because of special local pricing, availability or pricing adjustments not reflected in the dealer's computer system. See salesperson for the most current information.

Prepared for: Louie Yankovich, City of Green
 By: Tom Stancil Date: 03/15/2019



Ganley Ford, Inc.
2835 Barber Road, Barberton, Ohio, 442031003
Office: 330-745-9081
Fax: 330-745-4054

2019 F-250, SD Super Cab
4x4 SD Super Cab 6.75' box 148" WB SRW
XL(X2B)
Price Level: 950 Quote ID: 60014

Pricing - Single Vehicle

MSRP

Vehicle Pricing

Base Vehicle Price	\$38,280.00
Options & Colors	\$2,805.00
Upfitting	\$0.00
Destination Charge	\$1,595.00

Discount Adjustments

Discount	-\$13,877.66
----------	--------------

Subtotal	\$28,802.34
-----------------	--------------------

Post-Tax Adjustments

Code	Description	
Titling	Titling	\$19.50

Total	\$28,821.84
--------------	--------------------

Customer Signature

Acceptance Date

Prices and content availability as shown are subject to change and should be treated as estimates only. Actual base vehicle, package and option pricing may vary from this estimate because of special local pricing, availability or pricing adjustments not reflected in the dealer's computer system. See salesperson for the most current information.

Prepared for: Louie Yankovich, City of Green
By: Tom Stancil Date: 03/15/2019

